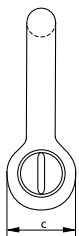
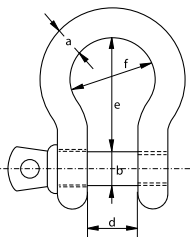


C



G-3161



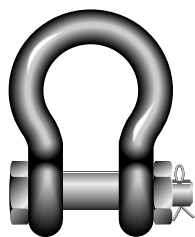
Yellow Pin Shackles

Bow shackle with screw collar pin

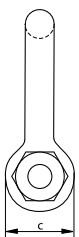
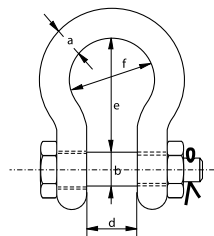
- **Material:** bow and pin high tensile steel, grade 6
- **Standard:** generally to US Fed. Spec. RR-C-271
- **Finish:** hot dipped galvanized
- **Certification:** 2.1 2.2 CE IIA
- **Note:** import quality

working load limit	diameter bow	diameter pin	diameter eye	width inside	length inside	width bow	weight each
t	a mm	b mm	c mm	d mm	e mm	f mm	kg
0.33	5	6	14	9,5	22	15	0.03
0.5	6	8	16	12	29	20	0.05
0.75	8	10	19	13,5	31	21	0.08
1	10	11	23	17	37	26	0.14
1.5	11	13	27	19	43	29	0.20
2	13	16	30	20	48	33	0.33
3.25	16	19	38	27	60	43	0.62
4.75	19	22	46	32	71	50	1.07
6.5	22	25	53	36	84	58	1.62
8.5	25	28	61	43	95	68	2.28
9.5	28	32	68	46	108	74	3.36
12	32	35	76	51	119	82	4.31
13.5	35	38	84	57	133	92	6.14
17	38	42	92	60	146	98	7.81
25	45	50	106	73	177	127	12.6

C



G-3163



Yellow Pin Shackles

Bow shackle with safety bolt

- **Material:** bow and pin high tensile steel, grade 6
- **Standard:** generally to US Fed. Spec. RR-C-271
- **Finish:** hot dipped galvanized
- **Certification:** 2.1 2.2 CE IIA
- **Note:** import quality

working load limit	diameter bow	diameter pin	diameter eye	width inside	length inside	width bow	weight each
t	a mm	b mm	c mm	d mm	e mm	f mm	kg
2	13	16	30	20	48	33	0.36
3.25	16	19	38	27	60	43	0.70
4.75	19	22	46	32	71	50	1.10
6.5	22	25	53	36	84	58	1.61
8.5	25	28	61	43	95	68	2.42
9.5	28	32	68	46	108	74	3.35
12	32	35	76	51	119	82	5.32
13.5	35	38	84	57	133	92	7.19
17	38	42	92	60	146	98	9.44
25	45	50	106	73	177	127	13.8

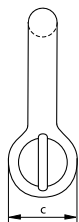
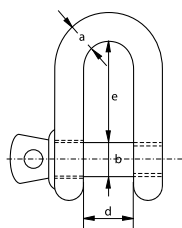
C

Yellow Pin Shackles

Dee shackle with screw collar pin



G-3151



- **Material:** bow and pin high tensile steel, grade 6
- **Standard:** generally to US Fed. Spec. RR-C-271
- **Finish:** hot dipped galvanized
- **Certification:** 2.1 2.2 CE IIA
- **Note:** import quality

working load limit	diameter bow	diameter pin	diameter eye	width inside	length inside	weight each
t	a mm	b mm	c mm	d mm	e mm	kg
0.33	5	6	12	9,5	19	0.03
0.5	6	8	16	12	22	0.04
0.75	8	10	19	13,5	26	0.08
1	10	11	23	17	32	0.13
1.5	11	13	27	19	37	0.20
2	13	16	30	20	41	0.28
3.25	16	19	38	27	51	0.57
4.75	19	22	46	32	60	1.19
6.5	22	25	53	36	71	1.43
8.5	25	28	61	43	81	2.16
9.5	28	32	68	46	90	3.06
12	32	35	76	51	100	4.11
13.5	35	38	84	57	111	5.28
17	38	42	92	60	122	6.69
25	45	50	106	73	146	12.1

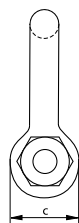
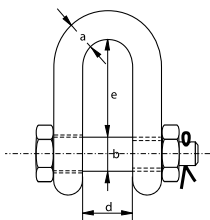
C

Yellow Pin Shackles

Dee shackle with safety bolt



G-3153



- **Material:** bow and pin high tensile steel, grade 6
- **Standard:** generally to US Fed. Spec. RR-C-271
- **Finish:** hot dipped galvanized
- **Certification:** 2.1 2.2 CE IIA
- **Note:** import quality

working load limit	diameter bow	diameter pin	diameter eye	width inside	length inside	weight each
t	a mm	b mm	c mm	d mm	e mm	kg
2	13	16	30	20	41	0.33
3.25	16	19	38	27	51	0.62
4.75	19	22	46	32	60	1.02
6.5	22	25	53	36	71	1.49
8.5	25	28	61	43	81	2.26
9.5	28	32	68	46	90	3.20
12	32	35	76	51	100	4.91
13.5	35	38	84	57	111	5.84
17	38	42	92	60	122	8.40
25	45	50	106	73	146	11.9