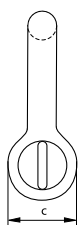
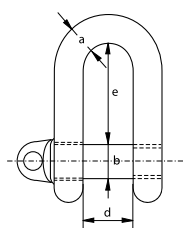


C

S-3351
G-3351

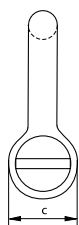
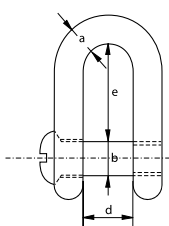
Shackles generally to DIN 82101 type A

Dee shackle with screw collar pin

- **Material:** bow and pin high tensile steel, grade 4
- **Safety Factor:** MBL equals 5 x WLL
- **Standard:** generally to DIN 82101 type A
- **Finish:** hot dipped galvanized or self-coloured
- **Certification:** 2.1 2.2 CE IIA
- **Note:** shackle no. 0.1 is electro-galvanized and will not have any markings as it is too small

no.	working load limit	diameter bow	diameter pin	diameter eye	width inside	length inside	weight each
	t	a mm	b mm	c mm	d mm	e mm	kg
0.1	0.1	5	5	10	7	15.5	0.02
0.16	0.16	6	6	12	8	18	0.02
0.25	0.25	8	8	16	11	24	0.05
0.4	0.4	10	10	20	14	30	0.10
0.6	0.63	12	12	24	17	36	0.18
1	1	13	16	32	21	49	0.30
1.6	1.6	16	20	40	27	61	0.57
2	2	20	22	44	30	67	0.98
2.5	2.5	22	24	48	33	73	1.30
3	3.15	25	27	54	38	83.5	1.85
4	4	28	30	60	42	91	2.53
5	5	32	36	72	47	111	4
6	6.3	36	39	78	53	119.5	5.30
8	8	41	45	90	60	139.5	7.90
10	10	44	48	96	66	147	10
12	12	49	52	104	73	158	13.5
16	16	55	60	120	81	185	19.2
20	20	61	68	136	90	211	28
25	25	67	72	144	100	221	34

C

S-3352
G-3352

Shackles generally to DIN 82101 type B

Dee shackle with counter sunk screw pin

- **Material:** bow and pin high tensile steel, grade 4
- **Safety Factor:** MBL equals 5 x WLL
- **Standard:** generally to DIN 82101 type B
- **Finish:** hot dipped galvanized or self-coloured
- **Certification:** 2.1 2.2 CE IIA
- **Note:** shackle no. 0.1 is electro-galvanized and will not have any markings as it is too small

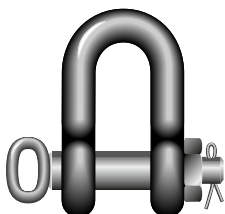
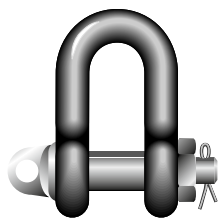
no.	working load limit	diameter bow	diameter pin	diameter eye	width inside	length inside	weight each
	t	a mm	b mm	c mm	d mm	e mm	kg
0.4	0.4	10	10	20	14	30	0.09
0.6	0.63	12	12	24	17	36	0.17
1	1	13	16	32	21	49	0.29
1.6	1.6	16	20	40	27	61	0.54
2	2	20	22	44	30	67	0.98
2.5	2.5	22	24	48	33	73	1.23
3	3.15	25	27	54	38	83.5	1.80
4	4	28	30	60	42	91	2.60
5	5	32	36	72	47	111	3.80
6	6.3	36	39	78	53	119.5	5.20
8	8	41	45	90	60	139.5	7.60
10	10	44	48	96	66	147	9.70

C

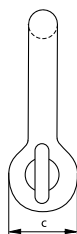
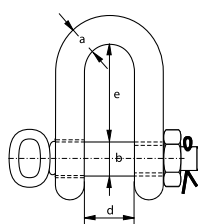
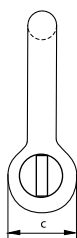
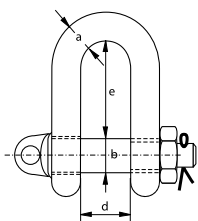
Shackles generally to DIN 82101 type C

Dee shackle with safety bolt

- **Material:** bow and pin high tensile steel, grade 4
- **Safety Factor:** MBL equals 5 x WLL
- **Standard:** generally to DIN 82101 type C
- **Finish:** hot dipped galvanized or self-coloured
- **Certification:** 2.1 2.2 CE IIA
- **Note:** with screw collar pin : up to size no. 25
with hand-grip : from size no. 32

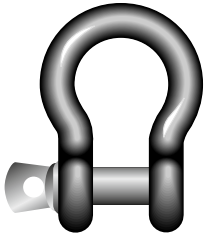


S-3356
G-3356

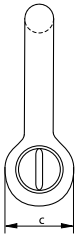
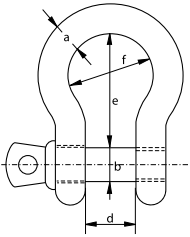


no.	working load limit	diameter bow	diameter pin	diameter eye	width inside	length inside	weight each
	t	a mm	b mm	c mm	d mm	e mm	kg
0.4	0.4	10	10	20	14	30	0.11
0.6	0.63	12	12	24	17	36	0.20
1	1	13	16	32	21	49	0.37
1.6	1.6	16	20	40	27	61	0.69
2	2	20	22	44	30	67	1.13
2.5	2.5	22	24	48	33	73	1.50
3	3.15	25	27	54	38	83.5	2.15
4	4	28	30	60	42	91	2.93
5	5	32	36	72	47	111	4.70
6	6.3	36	39	78	53	119.5	6.33
8	8	41	45	90	60	139.5	8.60
10	10	44	48	96	66	147	10.8
12	12	49	52	104	73	158	14.4
16	16	55	60	120	81	185	20.5
20	20	61	68	136	90	211	27.9
25	25	67	72	144	100	221	36
32	32	74	80	160	110	246	49
40	40	75	90	180	125	276	70
50	50	88	100	200	140	307	100
63	63	96	110	220	155	339	140
80	80	110	125	250	175	385.5	200
100	100	125	140	280	200	430	280

C



G-3161



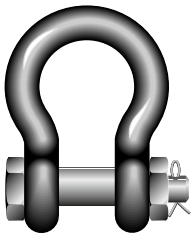
Yellow Pin Shackles

Bow shackle with screw collar pin

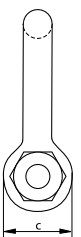
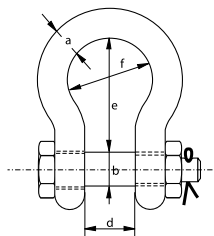
- **Material:** bow and pin high tensile steel, grade 6
- **Standard:** generally to US Fed. Spec. RR-C-271
- **Finish:** hot dipped galvanized
- **Certification:** 2.1 2.2 CE IIA
- **Note:** import quality

working load limit	diameter bow	diameter pin	diameter eye	width inside	length inside	width bow	weight each
t	a mm	b mm	c mm	d mm	e mm	f mm	kg
0.33	5	6	14	9,5	22	15	0.03
0.5	6	8	16	12	29	20	0.05
0.75	8	10	19	13,5	31	21	0.08
1	10	11	23	17	37	26	0.14
1.5	11	13	27	19	43	29	0.20
2	13	16	30	20	48	33	0.33
3.25	16	19	38	27	60	43	0.62
4.75	19	22	46	32	71	50	1.07
6.5	22	25	53	36	84	58	1.62
8.5	25	28	61	43	95	68	2.28
9.5	28	32	68	46	108	74	3.36
12	32	35	76	51	119	82	4.31
13.5	35	38	84	57	133	92	6.14
17	38	42	92	60	146	98	7.81
25	45	50	106	73	177	127	12.6

C



G-3163



Yellow Pin Shackles

Bow shackle with safety bolt

- **Material:** bow and pin high tensile steel, grade 6
- **Standard:** generally to US Fed. Spec. RR-C-271
- **Finish:** hot dipped galvanized
- **Certification:** 2.1 2.2 CE IIA
- **Note:** import quality

working load limit	diameter bow	diameter pin	diameter eye	width inside	length inside	width bow	weight each
t	a mm	b mm	c mm	d mm	e mm	f mm	kg
2	13	16	30	20	48	33	0.36
3.25	16	19	38	27	60	43	0.70
4.75	19	22	46	32	71	50	1.10
6.5	22	25	53	36	84	58	1.61
8.5	25	28	61	43	95	68	2.42
9.5	28	32	68	46	108	74	3.35
12	32	35	76	51	119	82	5.32
13.5	35	38	84	57	133	92	7.19
17	38	42	92	60	146	98	9.44
25	45	50	106	73	177	127	13.8

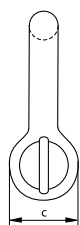
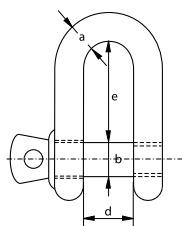
C

Yellow Pin Shackles

Dee shackle with screw collar pin



G-3151



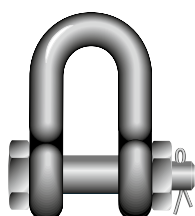
- **Material:** bow and pin high tensile steel, grade 6
- **Standard:** generally to US Fed. Spec. RR-C-271
- **Finish:** hot dipped galvanized
- **Certification:** 2.1 2.2 CE IIA
- **Note:** import quality

working load limit	diameter bow	diameter pin	diameter eye	width inside	length inside	weight each
t	a mm	b mm	c mm	d mm	e mm	kg
0.33	5	6	12	9,5	19	0.03
0.5	6	8	16	12	22	0.04
0.75	8	10	19	13,5	26	0.08
1	10	11	23	17	32	0.13
1.5	11	13	27	19	37	0.20
2	13	16	30	20	41	0.28
3.25	16	19	38	27	51	0.57
4.75	19	22	46	32	60	1.19
6.5	22	25	53	36	71	1.43
8.5	25	28	61	43	81	2.16
9.5	28	32	68	46	90	3.06
12	32	35	76	51	100	4.11
13.5	35	38	84	57	111	5.28
17	38	42	92	60	122	6.69
25	45	50	106	73	146	12.1

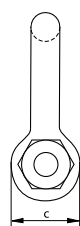
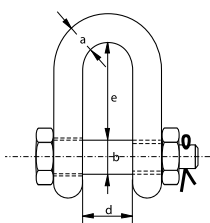
C

Yellow Pin Shackles

Dee shackle with safety bolt



G-3153



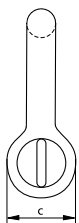
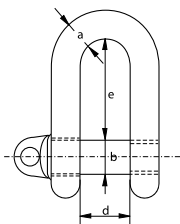
- **Material:** bow and pin high tensile steel, grade 6
- **Standard:** generally to US Fed. Spec. RR-C-271
- **Finish:** hot dipped galvanized
- **Certification:** 2.1 2.2 CE IIA
- **Note:** import quality

working load limit	diameter bow	diameter pin	diameter eye	width inside	length inside	weight each
t	a mm	b mm	c mm	d mm	e mm	kg
2	13	16	30	20	41	0.33
3.25	16	19	38	27	51	0.62
4.75	19	22	46	32	60	1.02
6.5	22	25	53	36	71	1.49
8.5	25	28	61	43	81	2.26
9.5	28	32	68	46	90	3.20
12	32	35	76	51	100	4.91
13.5	35	38	84	57	111	5.84
17	38	42	92	60	122	8.40
25	45	50	106	73	146	11.9

C



S-2751
G-2751



Shackles generally to B.S. 3032 table 2

Large dee shackle with screw collar pin

- **Material:** bow and pin alloy steel, EN 14a
- **Safety Factor:** MBL equals 4 x WLL
- **Standard:** generally to B.S. 3032 table 2
- **Finish:** hot dipped galvanized or self-coloured
- **Certification:** 2.1 2.2 CE IIA

working load limit	diameter bow	diameter pin	diameter eye	width inside	length inside	weight each
t	a mm	b mm	c mm	d mm	e mm	kg
0.25	6	10	19	13	25	0.11
0.5	10	13	25	19	38	0.17
0.75	13	16	32	28	54	0.35
1.5	16	19	38	32	64	0.66
2	19	22	44	38	73	1.02
3	22	25	51	44	83	1.57
3.75	25	28	57	51	95	2.30
5	28	32	64	54	105	3.20
6	32	35	70	60	114	4.30
7	35	38	76	67	127	5.40
9.5	38	45	89	70	137	6.80
11.25	42	48	95	76	146	8.70
13	44	51	102	83	156	11
14.25	48	54	108	92	178	14.3
16.25	51	57	114	98	187	20
18	54	60	121	105	197	26.4
20	57	64	127	108	210	28.3
25	64	73	146	121	235	35
30	70	79	159	133	260	49
35	76	86	171	146	279	63.6
40	79	89	178	149	292	71.7
50	89	102	203	171	330	101
65	102	114	229	191	375	151
80	114	127	254	219	419	215

C

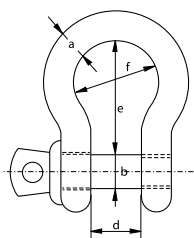
Commercial Shackles

Bow shackle with screw collar pin

- **Material:** mild steel, untreated, grade 3
- **Finish:** electro-galvanized
- **Certification:** 2.1
- **Note:** not to be used for lifting applications



E-1161



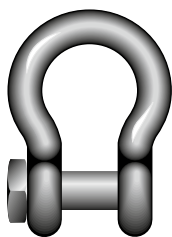
diameter bow	diameter pin	diameter eye	width inside	length inside	width bow	weight per 100 pcs
a mm	b mm	c mm	d mm	e mm	f mm	kg
5	5	10	10	20	15	1.40
6	6	12	12	24	18	2.40
8	8	16	16	32	24	5.40
10	10	20	20	40	30	10.6
11	11	22	22	44	33	16.4
12	12	24	24	48	36	19.4
14	14	28	28	56	42	44
16	16	32	32	64	48	44.2
19	19	38	38	76	57	82.8
22	22	44	44	88	66	116
25	25	50	50	100	75	168
28	28	56	56	112	84	232
32	32	64	64	128	96	382
38	38	76	76	152	114	623

C

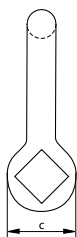
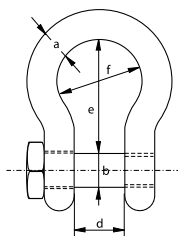
Commercial Shackles

Bow shackle with square head screw pin

- **Material:** mild steel, untreated, grade 3
- **Finish:** self-coloured
- **Certification:** 2.1
- **Note:** not to be used for lifting applications



S-1164

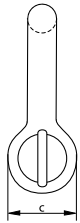
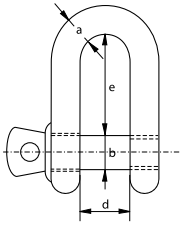


diameter bow	diameter pin	diameter eye	width inside	length inside	width bow	weight per 100 pcs
a mm	b mm	c mm	d mm	e mm	f mm	kg
6	6	12	12	24	18	2.70
8	8	16	16	32	24	6.40
10	10	20	20	40	30	12.5
11	11	22	22	44	33	16.6
12	12	24	24	48	36	21.6
14	14	28	28	56	42	34.3
16	16	32	32	64	48	51.2
19	19	38	38	76	57	100
22	22	44	44	88	66	133
25	25	50	50	100	75	195
28	28	56	56	112	84	275
32	32	64	64	128	96	410
38	38	76	76	152	114	686

C



E-1151



Commercial Shackles

Dee shackle with screw collar pin

- **Material:** mild steel, untreated, grade 3
- **Finish:** electro-galvanized
- **Certification:** 2.1
- **Note:** not to be used for lifting applications

diameter bow	diameter pin	diameter eye	width inside	length inside	weight per 100 pcs
a mm	b mm	c mm	d mm	e mm	kg
5	5	10	10	20	1.40
6	6	12	12	24	2.20
8	8	16	16	32	5.20
10	10	20	20	40	11.8
11	11	22	22	44	14
12	12	24	24	48	20.5
14	14	28	28	56	29.4
16	16	32	32	64	42.6
19	19	38	38	76	72.6
22	22	44	44	88	108
25	25	50	50	100	185
28	28	56	56	112	226
32	32	64	64	128	358
38	38	76	76	152	602

C

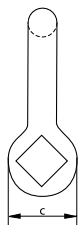
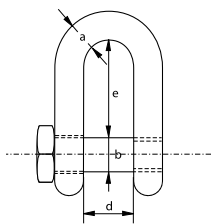
Commercial Shackles

Dee shackle with square head screw pin

- **Material:** mild steel, untreated, grade 3
- **Finish:** self-coloured
- **Certification:** 2.1
- **Note:** not to be used for lifting applications



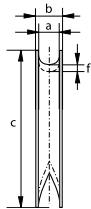
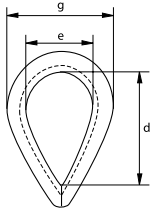
S-1154



diameter bow	diameter pin	diameter eye	width inside	length inside	weight per 100 pcs
a mm	b mm	c mm	d mm	e mm	kg
6	6	12	12	24	2.60
8	8	16	16	32	6.17
10	10	20	20	40	12
11	11	22	22	44	16
12	12	24	24	48	20.8
14	14	28	28	56	33.1
16	16	32	32	64	49.4
19	19	38	38	76	96.4
22	22	44	44	88	128
25	25	50	50	100	188
28	28	56	56	112	265
32	32	64	64	128	395
38	38	76	76	152	661



E-6110



Thimbles

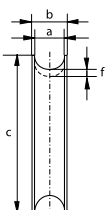
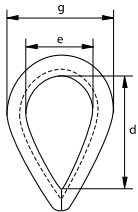
Standard commercial

- **Material:** mild steel
- **Finish:** electro-galvanized
- **Certification:** 2.1 CE IIB

diameter rope	width groove	width overall	length	length inside	width inside	thickness back	width	weight per 100 pcs
mm	a mm	b mm	c mm	d mm	e mm	f mm	g mm	kg
4	4	7	25	16	11	2.5	19	0.50
5	5	8	31	22	16	3	25	0.80
6	6	10	37	26	19	3.5	30	1.40
8	8	12	51	34	24	5	38	2.80
9	9	13	57	38	29	5.5	44	3
10	10	16	64	42	32	5.5	49	4.80
12	12	18	76	51	38	6.5	57	8
14	14	20	82	57	40	8	62	10
16	16	22	89	60	42	9	66	15
18	18	26	102	67	45	10	73	22
20	20	28	115	76	51	11	81	25
22	22	30	127	83	54	12.5	87	32
24	24	32	138	90	64	14	100	46
26	26	36	152	102	68	14.5	107	66
28	28	38	165	110	73	16	115	77
30	30	42	178	120	79	17	125	80
32	32	44	203	143	93	18	141	130



G-6120



Thimbles

Heavy duty stub-end

- **Material:** mild steel
- **Finish:** hot dipped galvanized
- **Certification:** 2.1 CE IIB

diameter rope	width groove	width overall	length	length inside	width inside	thickness back	width	weight per 100 pcs
mm	a mm	b mm	c mm	d mm	e mm	f mm	g mm	kg
8	9	13	51	35	22	4	44	0.50
10	11	15	64	47	30	4	54	0.80
12	13	18	76	57	35	5	62	1.40
14	15	21	89	65	45	6	76	2.80
16	18	22	102	75	50	6	83	3
18	20	28	114	85	53	7	91	4.80
20	22	30	127	94	60	8	102	8
22	24	31	140	107	65	9	110	10
24	26	34	152	114	70	9.5	118	15
28	30	39	178	130	80	10	134	22
32	34	41	203	157	100	10	162	25
36	38	48	229	175	115	11	182	32
40	42	51	254	198	120	12	188	46
44	46	62	280	214	130	14	210	66
50	53	65	305	220	140	18	248	77
56	57	68	356	245	150	23	262	80
64	67	85	407	286	185	20	280	130

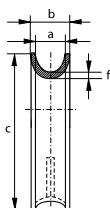
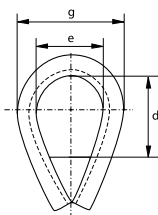
C

Thimbles

Heavy duty stub-end reinforced with welded fillet plate



G-6128



- **Material:** mild steel
- **Finish:** hot dipped galvanized reinforced with a welded fillet plate
- **Certification:** 2.1 CE II B

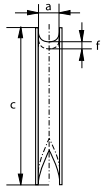
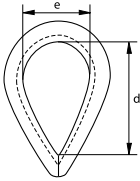
width groove	width overall	length	length inside	width inside	thickness back	width	weight per piece
a mm	b mm	c mm	d mm	e mm	f mm	g mm	kg
35	55	220	100	80	10	150	3.20
40	65	245	120	90	12	160	5.10
50	80	290	125	110	16	200	9.20
62	100	360	160	140	20	250	17.4
72	115	390	175	160	20	265	19.4
85	125	470	245	190	20	300	29
100	150	540	290	200	25	370	39
115	165	570	300	210	25	380	52

For shackle

group	width groove								
	a mm								
	35	40	50	62	72	85	100	115	
G-4161	17, 25	25	35, 42.5	55	85				
G-4163	17, 25	25	35, 42.5	55	85				
G-4151	17, 25	25	35, 42.5	55	85				
G-4153	17, 25	25	35, 42.5	55	85				
P-6036						120, 150	150, 200		
G-6038						120, 150	150, 200		
P-6033	30	30	40, 55	75	125	125			
G-5263	30, 40	40		85	120	150, 175	175		
G-5163	17, 25	25	35, 42.5	55	85				
P-6031						120, 150	150, 200		
G-4263	4.75 ~ 25	6.5 ~ 25	9.5 ~ 30	16 ~ 55	25 ~ 75	30 ~ 75	55, 75	75	
P-5363	17, 25	25	35, 42.5	55	85				
P-5365	17, 25	25	35, 42.5	55	85	120, 150	150, 200		
P-5367	17, 25	25	35, 42.5	55	85	120, 150	150		
G-4164	17, 25	25							
G-4154	17, 25	25							
G-4169	17								
G-4159	17								



E-6131
G-6131



Thimbles

Generally to DIN 6899 (B)

- **Material:** mild steel
- **Standard:** generally to DIN 6899 (B)
- **Finish:** thimbles for rope diameters up to and including 6 mm are electro-galvanized, other diameters are hot dipped galvanized
- **Certification:** 2.1 CE IIB

diameter rope	width groove	length	length inside	width inside	thickness back	weight per 100 pcs
mm	a mm	c mm	d mm	e mm	f mm	kg
2.5	3	22	19	12	1.6	0.60
3.5	4	26	21	13	1.6	0.80
4	5	32	23	14	1.9	1
5	6	38	25	16	2.4	2
6	7	44	28	18	2.4	2
7	8	51	32	20	2.8	2.70
9	10	57	38	24	3.1	4.10
11	12	64	45	28	3.3	6.90
13	13	70	48	30	3.3	7.20
13	14	76	51	32	3.7	10.2
15	16	83	58	36	3.8	16.4
16	17	89	61	38	4.7	19
17	18	95	64	40	4.7	20.3
18	20	102	72	45	5.7	27.3
20	22	114	80	50	5.7	30.8
22	24	127	90	56	6.5	44.8
24	26	140	99	62	6.8	59.2
26	28	152	112	70	8	72
28	30	165	120	75	8	104
30	32	178	128	80	8	115
32	34	203	152	95	8.5	153
34	36	216	160	100	8.5	176
36	38	229	176	110	8.5	176
38	40	241	184	115	10.5	292
40	42	254	192	120	10.5	320
42	45	305	240	150	10.5	364

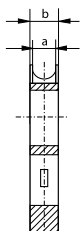
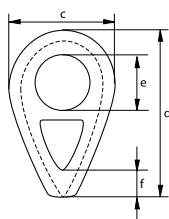
C

Thimbles

According to DIN 3091



S-6134

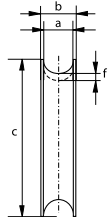
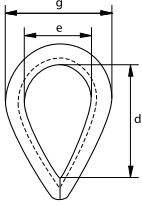


- **Material:** cast mild steel, (GTW 40)
- **Standard:** according to DIN 3091
- **Finish:** self-coloured
- **Certification:** 2.1 CE II B
- **Note:** the diameter (e) of the thimble for diameter wire rope 72 mm is 140 mm

diameter rope	width groove	width overall	width	length	diameter	length	weight per 100 pcs
mm	a mm	b mm	c mm	d mm	e mm	f mm	kg
8	9	15	40	56	14	-	18
10	11	17.5	50	70	18	-	32
12	13	20	60	84	21	-	52
14	16	23.5	70	98	25	-	80
16	18	26	80	130	28	16	90
18	20	28.5	90	145	31	18	121
20	22	31	100	161	35	20	161
22	24	33.5	110	177	38	22	211
24	26	36	120	193	41	24	271
26	29	39.5	130	209	44	26	355
28	31	42	140	224	47	28	420
32	35	47	160	256	53	32	630
36	40	53	180	288	59	36	884
40	44	58	200	320	65	40	1100
44	48	63	220	352	70	44	1500
48	53	69	240	384	76	48	2000
52	57	74	260	416	81	52	2500
56	62	80	280	448	86	56	3200
64	70	90	320	512	95	64	4600
72	79	101	360	576	140	72	6600



E-6135
G-6135



Thimbles

Generally to DIN 3090

- **Material:** mild steel
- **Standard:** generally to DIN 3090
- **Finish:** for diameter 4 and 6 mm electro-galvanized
other diameters hot dipped galvanized
- **Certification:** 2.1 CE II B

diameter wire rope	width groove	width overall	length	length inside	width inside	thickness back	width	weight per 100 pcs
mm	a	b	c	d	e	f	g	kg
4	5	8	35	20	10	2.1	25	1.40
6	7	10	50	30	15	2.6	33	3
8	9	13	68	40	20	4	43	7.10
10	11	15	77	50	25	5	47	17
12	13	19	100	60	30	6	63	24
14	16	22	110	70	35	8	70	31
16	18	25	125	80	40	8	80	50
18	20	27	142	90	45	9	90	62
20	22	30	155	100	50	10	102	90
22	24	33	165	110	55	10	107	100
24	26	35	180	120	60	10	120	130
26	29	36	190	130	65	12	122	220
28	31	37	197	140	70	12	128	240
32	35	43	225	160	80	15	145	216
36	40	60	250	180	90	15	170	430
40	44	66	290	200	100	20	190	570
44	48	72	315	220	110	20	205	850
48	53	77	350	240	120	20	220	1120
52	57	88	380	260	130	25	235	1530
56	62	95	405	280	140	25	270	2148
60	66	105	430	300	150	25	285	2300
64	70	110	485	320	160	30	310	3500

C

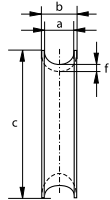
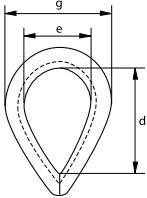
Thimbles

Generally to EN 13411-1

- **Material:** mild steel
- **Standard:** generally to EN 13411-1 formerly BS 464
- **Finish:** hot dipped galvanized
- **Certification:** 2.1 CE IIB



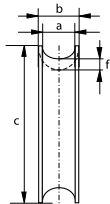
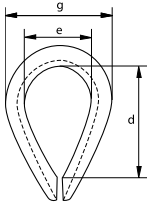
G-6170



diameter rope		width groove	width overall	length	length inside	width inside	thickness back	width	weight per 100 pcs
inch	mm	a mm	b mm	c mm	d mm	e mm	f mm	g mm	kg
³ / ₁₆	5	6	9.5	47	27	18	3	32	3.50
¹ / ₄	7	7	11	51	33	20.5	3.5	36	2.80
⁵ / ₁₆	8	8	12.7	52	33	22	4	38	5.70
³ / ₈	10	10	14.3	64	38	25	6.3	47.6	8
⁷ / ₁₆	11	13	17.5	73	41	29	7.9	52	14.2
¹ / ₂	13	14	20.6	79	45	32	7.9	58.8	18
⁹ / ₁₆	14	15	20.6	88	56	38	7.9	64	18.9
⁵ / ₈	16	16	22.2	96	59	41	8.7	74.5	22.4
¹¹ / ₁₆	17	19	28.6	108	67	45	9.5	79.4	39.7
³ / ₄	19	21	28.6	124	73	51	11.1	92	45.6
⁷ / ₈	22	22	31.7	131	83	56	12.7	102	61.5
¹⁵ / ₁₆	24	25	33.4	146	92	64	12.7	110	106
1	25	27	35	162	108	70	14.3	119	97.3
1 ¹ / ₈	29	29	38	178	112	76	15.9	133	151
1 ¹ / ₄	32	33	41.3	197	133	95	15.9	152	204
1 ³ / ₈	35	38	47.6	228	152	105	19	175	318
1 ¹ / ₂	38	41	52	254	165	114	23.8	197	363
1 ⁵ / ₈	41	47	57	280	188	120	24	205	499
1 ³ / ₄	44	51	57	286	178	127	25.4	228	556
1 ⁷ / ₈	48	60	66.6	317	190	133	28.6	248	-
2	51	64	69.8	330	203	140	30.1	257	-
2 ¹ / ₈	54	64	69.8	330	203	140	30.1	257	-
2 ¹ / ₄	57	67	76.2	356	246	160	31.7	296	-
2 ¹ / ₂	64	75	93	420	255	170	43	300	-



G-6142



Thimbles

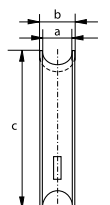
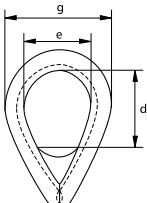
Generally to US Fed. Spec. FF-T-276b type III

- **Material:** mild steel
- **Standard:** generally to US Federal Specification FF-T-276b type III and generally to EN 13411-1
- **Finish:** hot dipped galvanized
- **Certification:** 2.1 CE IIB

diameter rope	width groove	width overall	length	length inside	width inside	thickness back	width	weight per 100 pcs
mm	a mm	b mm	c mm	d mm	e mm	f mm	g mm	kg
6	7	10	56	41	22	1.5	38	2.70
8	8	12.6	64	48	27	2	46	5.10
9	10	17.2	73	54	26	2.5	54	9.10
11	12	18	83	60	32	3	60	13.9
13	13.6	21.4	92	70	38	4	70	19.9
14	15	23	92	70	38	4	68	20.5
16	16.8	24.5	103	83	44	4	78	29.8
19	19.8	31.8	127	95	51	6	97	60.8
22	24	36	140	108	57	6	108	80.4
25	27	39	156	114	63	6	125	109
28 - 32	34	46	178	130	73	6	148	147
32 - 35	36	56	228	165	89	10	173	366
35 - 38	39	63	228	158	89	12	181	478
41	42	66	285	203	101	12	206	731
45	45	69	309	228	114	12	216	778
48 - 51	54	78	380	305	152	12	250	1150
57	60	92	435	356	178	16	301	1935
64	70	110	465	360	178	20	310	2640
76	85	125	550	410	180	20	330	3850



G-6151



Thimbles

Pennant line type

- **Material:** mild steel
- **Finish:** hot dipped galvanized produced with a welded fillet plate
- **Certification:** 2.1 CE IIB

diameter wire rope	width groove	width overall	length	length inside	width inside	width	weight each
mm	a mm	b mm	c mm	d mm	e mm	g mm	kg
16	17	22	102	50	50	75	0.40
18	19	25	114	50	53	85	0.50
20	21	29	127	60	60	100	0.80
22	23	33	140	60	65	110	0.90
24	25	34	152	70	70	115	1
28	30	38	178	75	80	135	1.70
30	33	44	203	80	100	155	2.50
36	38	49	229	110	115	175	4
40	41	52	254	120	120	190	4.50
44	46	60	279	120	130	210	7
50	52	65	305	140	145	245	8.30
56	60	72	356	155	155	260	12.5
64	70	84	432	200	190	310	19.5
76	81	119	483	235	230	350	29
82	92	130	559	240	255	395	35
90	105	145	610	275	280	430	42
120	120	155	660	295	285	450	58

C

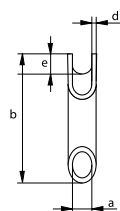
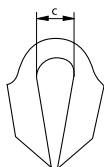
Thimbles

Tubular type

- **Material:** mild steel
- **Finish:** painted
- **Certification:** 2.1 CE IIB



P-6190



diameter wire rope	diameter	length	width inside	thickness	height	weight each
mm	a mm	b mm	c mm	d mm	e mm	kg
10	12	90	23	4	8	0.23
12	15	105	27	5	10	0.40
14	17	115	27	5	10	0.50
16	19	120	32	5	12	0.60
18	22	140	35	5	15	0.75
22	25	180	45	6	16	1.40
24	28	180	45	7	16	1.75
26	30	195	47	7	18	2
32	35	215	60	7	22	2.50
38	45	260	70	7	27	3.50
44	50	280	75	7	28	4.20

C

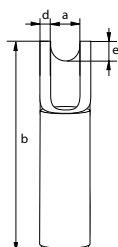
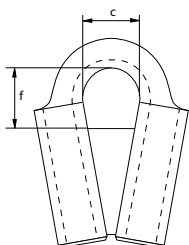
Thimbles

Tubular type with welded plate

- **Material:** mild steel
- **Finish:** painted
- **Certification:** 2.1 CE IIB



P-6195

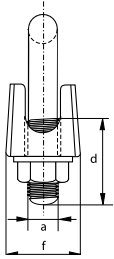
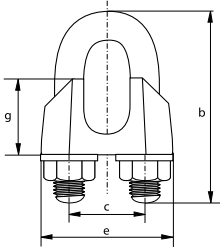


diameter wire rope	width groove	length	width inside	thickness	height	length inside	weight each
mm	a mm	b mm	c mm	d mm	e mm	f mm	kg
10	12	84	23	4	8	24	0.26
12	15	95	27	5	10	31	0.42
14	17	100	27	5	10	38	0.48
16	19	112	32	5	12	46	0.61
18	22	125	35	5	15	47	0.95
22	25	150	45	6	16	61	1.33
24	28	157	45	7	16	56	1.67
26	30	170	47	7	18	68	1.96
32	35	190	60	7	22	73	2.43
36	40	212	70	9	26	80	4.32
38	45	228	70	7	27	94	3.67

C



E-6260



Wire Rope Clip

Generally to EN 13411-5 Type A

- **Material:** bridge: malleable steel
U-bolt: mild steel
- **Standard:** EN 13411-5 Type A
formerly DIN 1142
- **Finish:** electro-galvanized
- **Certification:** 2.1 CE II B

diameter wire rope	diameter	length bow	width inside	length thread	length base	thickness base	height base	weight per 100 pcs
mm	a mm	b mm	c mm	d mm	e mm	f mm	g mm	kg
5	5	25	12	14	25	13	13	2.30
6.5	6	32	14	17	30	16	14	3.90
8	8	41	18	20	39	20	18	8.40
10	8	46	20	24	40	20	21	8.40
12	10	56	24	28	50	25	24	17
13	12	64	29	29	55	28	29	26.1
14	12	66	28	31	59	30	28	28.6
16	14	76	34	35	64	32	35	42
19	14	83	37	36	68	33	40	49
22	16	96	41	40	74	34	44	67
26	20	111	46	50	84	38	51	111
30	20	127	54	55	95	41	59	140
34	22	141	60	60	105	45	67	202
40	24	159	68	65	117	49	77	268

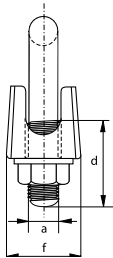
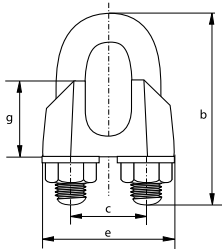
C

Wire Rope Clip

Generally to DIN 741



E-6220



- **Material:** bridge: cast
U-bolt: mild steel
- **Standard:** formerly DIN 741
- **Finish:** electro-galvanized
- **Certification:** 2.1 CE IIB

diameter wire rope	diameter	length bow	width inside	length thread	length base	thickness base	height base	weight per 100 pcs
mm	a mm	b mm	c mm	d mm	e mm	f mm	g mm	kg
3	4	20	9	12	21	10	10	1
5	5	24	11	13	23	11	10	1.40
6	5	28	13	15	26	12	11	1.60
8	6	34	16	19	30	14	15	3.30
10	8	42	19	22	34	18	17	6
11	8	44	20	22	36	19	18	7
13	10	55	24	30	42	23	21	11.8
14	10	57	25	30	44	23	22	12.4
16	12	63	29	33	50	26	26	19
19	12	75	32	38	54	29	30	23.6
22	14	85	37	44	61	33	34	36.6
26	14	95	41	45	65	35	37	41
30	16	110	48	50	74	37	43	62
34	16	120	52	55	80	42	50	74.4
40	16	140	58	60	88	45	55	108
45	18	163	65	75	97	49	60	134
50	20	170	72	77	106	51	65	174

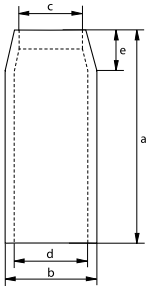
C

Prescon sleeves

For wire rope



S-6500

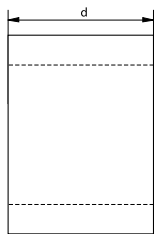
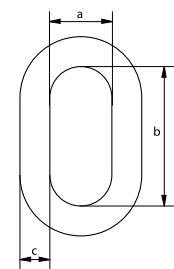


- **Material:** special carbon steel
- **Finish:** up to and including size 16 mm colour coded
sizes above 16 mm self-coloured
- **Certification:** 2.1 CE IIB

diameter wire rope	length	diameter outside	diameter inside	diameter inside	length	diameter outside pressed	weight per 100 pcs
mm	a mm	b mm	c mm	d mm	e mm	mm	kg
6	25.4	16.7	8.3	11.9	7.1	12.7	2.15
8	38.1	23	11.1	15.5	11.1	18.5	6.50
10	38.1	23	11.9	16.7	11.1	18.5	5.50
11	51	31	14.3	21.4	15.1	24.9	11.3
13	51	31	15.9	23	15.1	24.9	12.5
14	70	37	17.5	26.2	17.9	30.5	19.5
16	70	37	19.1	27.8	17.9	30.5	25.9
19	81	43.6	23.4	32.5	21.8	35.8	39.9
22	90	51.6	26.2	38.9	25.4	41.4	62
25	102	58	29.4	43.7	28.6	47.8	85
28	122	64	32.5	49.2	31.8	53	118
32	132	71	36.5	55	35.7	58	154
34 - 35	148	76	39.7	60	39.7	62	195
37 - 38	159	83	42.9	66.7	42.9	67	227
44 - 45	184	102	49.2	79	50	77	367
50 - 52	216	111	57	92	57	89	510
56 - 57	243	128	64	102	64	103	862
62 - 64	267	140	70	114	71	113	1043
68 - 70	292	146	76	121	79	118	1270
75 - 76	305	152	83	127	86	124	1334
87 - 89	356	178	98	148	100	145	2105
93 - 95	381	191	103	160	108	156	2495
100 - 102	406	206	111	173	114	180	3130
112 - 114	457	232	124	194	129	187	4536



A-6550



Aluminium sleeves

For wire rope

- **Material:** aluminium
- **Standard:** EN 13411-3 formerly DIN 3093 A
- **Finish:** self-coloured
- **Certification:** 2.1 CE IIB

size	diameter	width	thickness	length	weight per 1000 pcs
	a mm	b mm	c mm	d mm	kg
1	1.2	2.4	0.65	5	0.10
1.5	1.7	3.4	0.75	6	0.21
2	2.2	4.4	0.85	7	0.24
2.5	2.7	5.4	1.05	9	0.50
3	3.3	6.6	1.25	11	0.84
3.5	3.8	7.6	1.5	13	1.32
4	4.4	8.8	1.7	14	2
4.5	4.9	9.8	1.9	16	2.61
5	5.5	11	2.1	18	5
6	6.6	13.2	2.5	21	5
6.5	7.2	14.4	2.7	23	7.55
7	7.8	15.6	2.9	25	9.53
8	8.8	17.6	3.3	28	15
9	9.9	19.8	3.7	32	19.8
10	10.9	21.8	4.1	35	25
11	12.1	24.2	4.5	39	35.8
12	13.2	26.4	4.9	42	45.8
13	14.2	28.4	5.4	46	59.7
14	15.3	30.6	5.8	49	73.5
16	17.5	35	6.7	56	111
18	19.6	39.2	7.6	63	159
20	21.7	43.4	8.4	70	220
22	24.3	48.6	9.2	77	280
24	26.4	52.8	10	84	376
26	28.5	57	10.9	91	481
28	31	62	11.7	98	603
30	33.1	66.2	12.5	105	735
32	35.2	70.4	13.4	112	897
34	37.8	75.6	14.2	119	1080
36	39.8	79.6	15	126	1275
38	41.9	83.8	15.8	133	1490
40	44	88	16.6	140	1734
42	46.2	92.4	17.5	147	1940
44	48.4	96.8	18.3	154	2314
46	50.6	101.2	19.2	161	2557
48	52.8	105.6	20	168	3010
50	55	110	20.8	175	3400
52	57.2	114.4	21.6	182	3813
54	59.4	118.8	22.5	189	4120
56	61.6	123.2	23.3	196	4772
58	63.8	127.6	24.2	203	5200
60	66	132	25	210	5880

EN 13411-3 Table A.2 - Ferrule size numbers

Rope diameter			Ferrule size number			
			Case 1	Case 2	Case 3	Case 4
Nominal d mm	Measured		single layer round strand ropes with FC and cable laid ropes C* ≥ 0,283	single layer round strand ropes with IWRC and rotation-resistant round strand ropes C* ≤ 0,487	single layer round strand ropes with IWRC, rotation-resistant ropes and parallel-closed ropes 0,487 < C* ≤ 0,613	spiral strands 2 ferrules C* ≤ 0,613
	from mm	to mm				
2.5	2.5	2.7	2.5	3	-	-
3	2.8	3.2	3	3.5	-	-
3.5	3.3	3.7	3.5	4	-	-
4	3.8	4.3	4	4.5	-	5
4.5	4.4	4.8	4.5	5	-	6
5	4.9	5.4	5	6	-	6.5
6	5.5	5.9	6	6.5	-	7
	6	6.4			7	
6.5	6.5	6.9	6.5	7	8	8
7	7	7.4	7	8	9	9
8	7.5	7.9	8	9	9	10
	8	8.4			10	
9	8.5	8.9	9	10	10	11
	9	9.5			11	
10	9.6	9.9	10	11	11	12
	10	10.5			12	
11	10.6	10.9	11	12	12	13
	11	11.6			13	
12	11.7	11.9	12	13	13	14
	12	12.6			14	
13	12.7	12.9	13	14	14	16
	13	13.7			16	
14	13.8	13.9	14	16	16	18
	14	14.7			18	
16	14.8	15.9	16	18	18	20
	16	16.8			20	
18	16.9	17.9	18	20	20	22
	18	18.9			22	
20	19	19.9	20	22	22	24
	20	21			24	
22	21.1	21.9	22	24	24	26
	22	23.1			26	
24	23.2	23.9	24	26	26	28
	24	25.2			28	
26	25.3	25.9	26	28	28	30
	26	27.3			30	
28	27.4	27.9	28	30	30	32
	28	29.4			32	
30	29.5	29.9	30	32	32	34
	30	31.5			34	
32	31.6	31.9	32	34	34	36
	32	33.6			36	
34	33.7	33.9	34	36	36	38
	34	35.7			38	
36	35.8	35.9	36	38	38	40
	36	37.8			40	
38	37.9	37.9	38	40	40	44
	38	39.9			44	
40	40	42	40	44	48	48
44	42.1	43.9	44	48	48	48
	44	46.2			52	
48	46.3	47.9	48	52	52	52
	48	50.4			56	
52	50.5	51.9	52	56	56	60
	52	54.6			60	
56	54.7	55.9	56	60	-	-
	56	58.8			-	
60	58.9	59.9	60	-	-	-
	60	63		-		

* for metallic cross-sectional area factor C refer to EN 12385 parts 4, 5 & 10

C

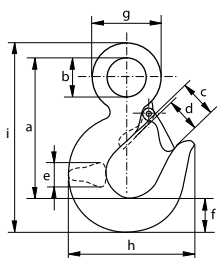
Eye hook

Grade 4 large eye hook with safety latch

- **Material:** carbon steel, grade 4
- **Safety factor:** MBL equals 5 x WLL
- **Finish:** painted green
- **Certification:** 2.1 2.2 3.1 CE IIA



P-6714C



working load limit	length	diameter eye inside	opening hook	opening hook	thickness	width	diameter eye outside	width outside	length outside	weight each
t	a mm	b mm	c mm	d mm	e mm	f mm	g mm	h mm	i mm	kg
0.8	81	19	24	20	16	19	37	70	109	0.29
1	91	23	26	22	18	22	46	79	124	0.44
1.6	105	27	32	27	20	27	52	93	145	0.64
2	124	32	34	30	24	30	62	109	169	1.08
3.2	147	39	44	37	31	36	74	127	201	1.81
5	190	50	55	48	37	48	96	168	261	3.75

CAD

C

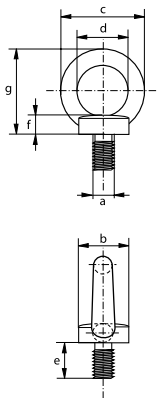
Eye bolts, generally to DIN 580

Generally to DIN 580

- **Material:** carbon steel, C15
- **Safety factor:** MBL equals 6 x WLL
- **Standard:** generally to DIN 580
- **Finish:** electro-galvanized
- **Certification:** 2.1 2.2 CE IIA



E-8140

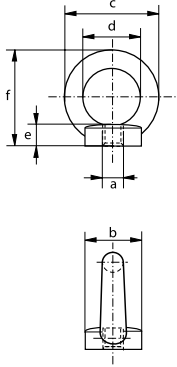


working load limit	diameter thread	diameter base	diameter eye outside	diameter eye inside	length	thickness base	height	weight per 100 pcs
t	a mm	b mm	c mm	d mm	e mm	f mm	g mm	kg
0.07	M6 x 1.00	20	36	20	13	6	36	5.10
0.14	M8 x 1.25	20	36	20	13	6	36	5.50
0.23	M10 x 1.50	25	45	25	17	8	45	10.3
0.34	M12 x 1.75	30	54	30	20.5	10	53	16.9
0.49	M14 x 2.00	35	63	35	27	12	60	29.9
0.7	M16 x 2.00	35	63	35	27	12	62	30.7
0.9	M18 x 2.00	40	72	40	30	14	71	42.8
1.2	M20 x 2.50	40	72	40	30	14	71	42.4
1.5	M22 x 2.50	45	81	45	36	14	80	62.8
1.8	M24 x 3.00	50	90	50	36	18	90	90.8
2.5	M27 x 3.00	50	90	50	39	18	90	88.3
3.2	M30 x 3.50	65	108	60	45	22	109	159
4.3	M33 x 3.50	65	108	60	45	22	110	167
4.6	M36 x 4.00	75	126	70	54	26	128	235
6.1	M39 x 4.00	75	126	70	54	26	130	266
6.3	M42 x 4.50	85	144	80	63	30	147	403
8	M45 x 4.50	85	144	80	63	35	150	521
8.6	M48 x 5.00	100	166	90	68	35	168	632
11.5	M56 x 5.50	110	184	100	78	38	187	879
16	M64 x 6.00	120	206	110	90	42	208	1240
20	M72 x 6.00	150	260	140	100	50	260	2293

CAD



E-8142



Eye nuts, generally to DIN 582

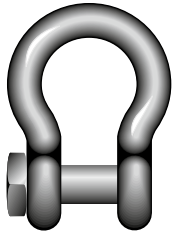
Generally to DIN 582

- **Material:** carbon steel, C15
- **Safety factor:** MBL equals 6 x WLL
- **Standard:** generally to DIN 582
- **Finish:** electro-galvanized
- **Certification:** 2.1 2.2 CE IIA

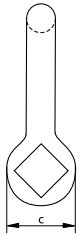
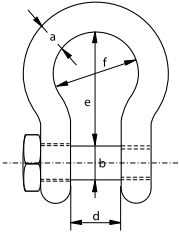
working load limit	diameter thread	diameter base	diameter eye outside	diameter eye inside	thickness base	height	weight per 100 pcs
t	a mm	b mm	c mm	d mm	e mm	f mm	kg
0.07	M6 x 1.00	20	36	20	8.5	36	5.10
0.14	M8 x 1.25	20	36	20	8.5	36	5.20
0.23	M10 x 1.50	25	45	25	10	45	9.40
0.34	M12 x 1.75	30	54	30	11	53	16
0.49	M14 x 2.00	35	63	35	13	60	25.5
0.7	M16 x 2.00	35	63	35	13	62	24
0.9	M18 x 2.00	40	72	40	16	71	36
1.2	M20 x 2.50	40	72	40	16	71	35.2
1.5	M22 x 2.50	45	81	45	18	80	51.7
1.8	M24 x 3.00	50	90	50	20	90	75.4
2.5	M27 x 3.00	50	90	50	20	90	102
3.2	M30 x 3.50	65	108	60	25	109	125
4.3	M33 x 3.50	65	108	60	25	109	131
4.6	M36 x 4.00	75	126	70	30	128	208
6.1	M39 x 4.00	75	126	70	30	130	210
6.3	M42 x 4.50	85	144	80	35	147	305
8	M45 x 4.50	85	144	80	35	150	407
8.6	M48 x 5.00	110	184	100	45	187	502
8.6	M52 x 5.00	110	184	100	45	187	830
11.5	M56 x 5.50	110	184	100	45	187	669
16	M64 x 6.00	120	206	110	50	208	930
21	M72 x 6.00	150	260	140	60	260	1500

CAD

C



P-3764



Fishing Shackles

Bow shackle with square head screw pin

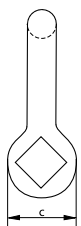
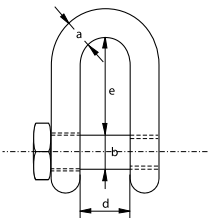
- **Material:** mild steel
- **Safety factor:** MBL equals 5 x WLL
- **Finish:** painted blue
- **Certification:** 2.1 2.2

working load limit	diameter bow	diameter pin	diameter eye	width inside	length inside	width bow	weight each
t	a mm	b mm	c mm	d mm	e mm	f mm	kg
1.5	13	16	32	25	48	36	0.37
2.5	16	20	40	32	64	48	0.71
3	20	22	48	38	79	60	1.24

C



P-3754



Fishing Shackles

Dee shackle with square head screw pin

- **Material:** mild steel
- **Safety factor:** MBL equals 5 x WLL
- **Finish:** painted blue
- **Certification:** 2.1 2.2

working load limit	diameter bow	diameter pin	diameter eye	width inside	length inside	weight each
t	a mm	b mm	c mm	d mm	e mm	kg
1.5	13	16	32	25	48	0.36
2.5	16	20	40	32	64	0.69
3	20	22	48	38	75	1.18
4	22	25	53	44	83	1.61

C

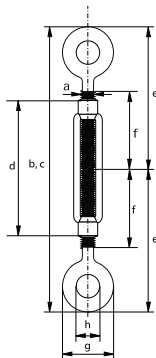
Rigging screws Eye-Eye

According to DIN 1480

- **Material:** drop forged mild steel
- **Standard:** DIN 1480
- **Finish:** electro-galvanized
- **Certification:** 2.1



E-6351



diameter thread	length closed position	length open position	length body	length end fitting	length thread	diameter eye outside	diameter eye inside	weight each
a mm	b mm	c mm	d mm	e mm	f mm	g mm	h mm	kg
5	114	170	70	57	35	16	8	0.07
6	160	246	110	80	55	20	9	0.11
8	168	248	110	84	57	22	10	0.2
10	210	300	125	105	68	31	14	0.28
12	222	305	125	110	70	35	16	0.43
14	244	334	140	123	75	40	18	0.61
16	300	416	170	143	88	47	22	1
20	334	466	200	165	105	52	24	1.60
22	372	527	220	185	118	60	27	2.20
24	410	587	255	208	135	65	27	2.80
30	440	605	255	220	135	71	31	4.10
33	490	690	295	245	148	88	36	6
36	554	740	295	277	158	94	38	8.50
42	600	800	330	300	170	110	49	11

C

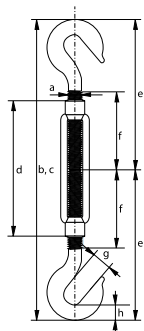
Rigging screws Hook-Hook

According to DIN 1480

- **Material:** drop forged mild steel
- **Standard:** DIN 1480
- **Finish:** electro-galvanized
- **Certification:** 2.1



E-6352



diameter thread	length closed position	length open position	length body	length end fitting	length thread	opening hook	thickness hook	weight each
a mm	b mm	c mm	d mm	e mm	f mm	g mm	h mm	kg
6	184	270	110	92	55	8	15	0.11
8	200	280	110	100	57	10.5	15	0.20
10	234	323	125	117	68	13	11	0.28
12	260	343	125	130	70	16	13	0.43
14	278	368	140	139	75	18	15	0.61
16	322	438	170	161	88	20	17	1
20	382	514	200	191	105	21	21	1.60
22	456	601	220	228	118	24	28	2.20
24	496	673	255	248	135	26	33	2.80
30	550	715	255	275	135	34	35	4.10
33	600	799	295	300	148	38	40	6
36	640	825	295	320	158	46	45	8.30

C

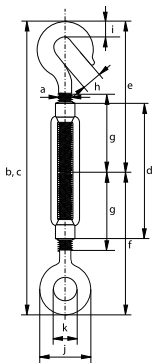
Rigging screws Eye-Hook

According to DIN 1480

- **Material:** drop forged mild steel
- **Standard:** DIN 1480
- **Finish:** electro-galvanized
- **Certification:** 2.1



E-6354



diameter thread	length closed position	length open position	length body	length end fitting	length end fitting	length thread	opening hook	thickness hook	diameter eye outside	diameter eye inside	weight each
a mm	b mm	c mm	d mm	e mm	f mm	g mm	h mm	i mm	j mm	k mm	kg
5	125	180	70	56	57	35	7	12	16	8	0.07
6	172	258	110	77	80	55	8	15	20	9	0.11
8	184	264	110	85	84	57	10.5	15	22	10	0.20
10	222	311	125	106	105	68	13	11	31	14	0.28
12	241	324	125	117	111	70	16	13	35	16	0.43
14	261	351	140	124	122	75	18	15	40	18	0.61
16	311	427	170	144	150	88	20	17	47	22	1
20	358	490	200	170	167	105	21	21	52	24	1.60
22	414	559	220	200	186	118	24	28	60	27	2.20
24	453	630	255	215	205	135	26	33	65	27	2.80
30	495	660	255	240	220	135	34	35	71	31	4.10
33	545	744	295	260	245	148	38	40	88	36	6
36	597	782	295	275	277	158	46	45	94	38	8.40

C

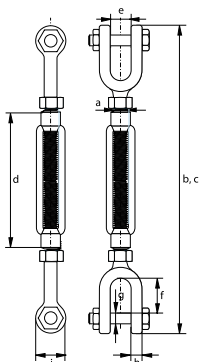
Rigging screws Jaw-Jaw

According to DIN 1480

- **Material:** drop forged mild steel
- **Standard:** DIN 1480
- **Finish:** electro-galvanized
- **Note:** supplied with locking nuts
- **Certification:** 2.1



E-6353



diameter thread	length closed position	length open position	length body	opening jaw	length inside	diameter pin	thickness jaw eye	diameter jaw eye	weight each
a mm	b mm	c mm	d mm	e mm	f mm	g mm	h mm	i mm	kg
6	191	277	110	7.5	12	M 6	5	13	0.16
8	194	274	110	8.5	12	M 6	6	14	0.21
10	236	325	125	11	16	M 8	8	18	0.38
12	266	349	125	13	20	M 10	10	24	0.66
14	316	406	140	16	30	M 12	12	28	1.15
16	374	490	170	18	38	M 12	12	32	1.45
20	438	570	200	20	42	M 16	16	38	2.61
22	466	611	220	22	44	M 18	18	40	3.24
24	514	691	255	24	46	M 20	20	42	4.35
30	544	709	255	30	50	M 24	22	46	6.48

C

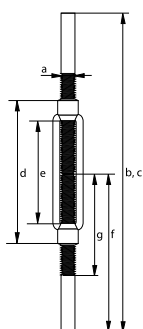
Rigging screws with Welding Ends

According to DIN 1480

- **Material:** drop forged mild steel
- **Standard:** DIN 1480
- **Finish:** Body: electro-galvanized
Welding ends: self-coloured
- **Certification:** 2.1



E-6355



diameter thread	length closed position	length open position	length body	length body inside	length stub-ends	length thread	weight per 100 pcs
a mm	b mm	c mm	d mm	e mm	f mm	g mm	kg
6	240	326	110	86	120	65	9.30
8	240	320	110	80	120	65	14
10	300	389	125	89	150	75	29
12	300	383	125	83	150	75	40
14	330	420	140	90	165	85	66
16	400	516	170	116	200	100	89
20	440	572	200	132	220	120	160
22	440	585	220	145	220	130	227
24	520	697	255	177	260	150	282
30	520	685	255	165	260	160	423
36	600	780	295	185	300	180	710

C

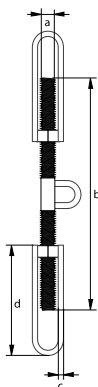
Turnbuckles (hamburgers)

For deck lashing

- **Material:** mild steel
- **Finish:** self-coloured
- **Certification:** 2.1



S-6330



minimum breaking load	diameter thread	length thread	diameter bow	length bow	weight each
t	a mm	b mm	c mm	d mm	kg
13	24	400	16	210	2.80
18	27	400	18	210	4.40
20	30	400	20	210	5
21	36	400	20	210	7

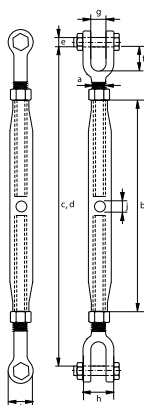
C

Closed body rigging screws Jaw-Jaw

- **Material:** mild steel
- **Safety factor:** MBL equals 5 x WLL,
- **Finish:** hot dipped galvanized
- **Certification:** 2.1 2.2 CE IIA
- **Note:** end fittings of 6 and 8 mm rigging screws are electro-galvanized



G-6343

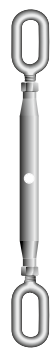


working load limit	diameter thread	length body	length closed position	length open position	diameter pin	length inside	opening jaw	width jaw	diameter jaw eye	diameter hole	weight each
t	a mm	b mm	c mm	d mm	e mm	f mm	g mm	h mm	i mm	j mm	kg
0.2	6	100	170	250	5	19	7	20	13	6	0.15
0.32	8	108	199	279	6	25	9	24	14	8	0.26
0.5	10	125	222	312	8	26	10.5	28	19	8	0.45
0.7	12	195	315	470	10	32	13	34	23	10	0.85
1.2	16	230	388	568	12	39	18	42	29	11	1.51
1.5	20	270	449	654	16	46	20	51	33	12	2.62
2.2	22	295	490	715	20	55	25	55	38	12	3.94
3.2	24	325	538	793	22	63	30	70	46	12	5.16
4.8	33	370	680	965	30	85	38	82	60	14	11.6
6	39	400	707	1002	33	86	45	85	76	15	14.2
8.5	45	400	761	1011	39	105	50	94	85	16	20.8
11	48	400	780	1005	45	119	58	98	92	16	24

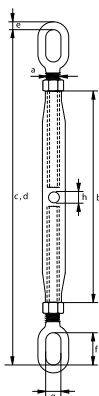
C

Closed body rigging screws Eye-Eye

- **Material:** mild steel
- **Safety factor:** MBL equals 5 x WLL,
- **Finish:** hot dipped galvanized
- **Certification:** 2.1 2.2 CE IIA
- **Note:** end fittings of 6 and 8 mm rigging screws are electro-galvanized



G-6340



working load limit	diameter thread	length body	length closed position	length open position	diameter	length eye inside	width eye inside	diameter hole	weight each
t	a mm	b mm	c mm	d mm	e mm	f mm	g mm	h mm	kg
0.2	6	100	160	240	5.5	11	11	6	0.12
0.32	8	108	175	255	6	12	12	8	0.19
0.5	10	125	205	300	8.5	13	13	8	0.34
0.7	12	195	298	458	11	19	15	10	0.77
1.2	16	230	356	531	12	28	20	11	1.31
1.5	20	270	423	628	16	34	24	12	2.36
2.2	22	295	463	688	16	34	24	12	2.94
3.2	24	325	502	752	19	37	28	12	3.86
4.8	33	370	602	882	29	41	35	14	8.95
6	39	400	651	951	35	45	40	15	11
8.5*	45	400	721	897	31	49	49	16	13.4
11*	48	400	767	1032	37	52	52	16	17.9

* Different design

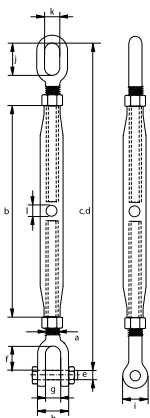
C

Closed body rigging screws Eye-Jaw

- **Material:** mild steel
- **Safety factor:** MBL equals 5 x WLL,
- **Finish:** hot dipped galvanized
- **Certification:** 2.1 2.2 CE IIA
- **Note:** end fittings of 6 and 8 mm rigging screws are electro-galvanized



G-6345

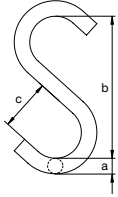


working load limit	diameter thread	length body	length closed position	length open position	diameter pin	length jaw inside	opening jaw	width jaw	diameter jaw eye	length eye inside	width eye inside	diameter hole	weight each
t	a mm	b mm	c mm	d mm	e mm	f mm	g mm	h mm	i mm	j mm	k mm	l mm	kg
0.2	6	100	165	245	5	19	7	20	13	11	11	6	0.14
0.32	8	108	187	267	6	25	9	24	14	12	12	8	0.24
0.5	10	125	214	306	8	26	10.5	28	19	13	13	8	0.53
0.7	12	195	307	464	10	32	13	34	23	19	15	10	0.83
1.2	16	230	372	549	12	39	18	42	29	28	20	11	1.49
1.5	20	270	436	641	16	46	20	51	33	34	24	12	2.54
2.2	22	295	477	701	20	55	25	55	38	34	24	12	3.34
3.2	24	325	520	772	22	63	30	70	46	37	28	12	4.65
4.8	33	370	641	923	30	85	38	82	60	41	35	14	10.5
6	39	400	679	976	33	86	45	85	76	45	40	15	12.8
8.5*	45	400	741	945	39	105	50	94	85	49	49	16	20.8
11*	48	400	774	1018	45	119	58	98	92	52	52	16	24

* Different design



S



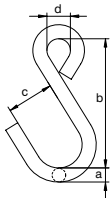
S-Hook

- **Material:** high tensile steel
- **Safety factor:** MBL equals 4 x LC
- **Finish:** painted red
- **Certification:** 2.1 2.2
- **Note:** not designed for lifting

lashing capacity	diameter	length	width	weight each
t	a mm	b mm	c mm	kg
0.2	10	80	30	0.11
0.3	13	100	40	0.24
0.5	16	130	50	0.47
0.75	18	160	60	0.80
1	20	180	65	1.02
1.2	22	200	70	1.40
1.5	24	220	80	1.95
2	32	260	90	3.50
3	36	320	100	5.16
4	40	360	115	7.48
5	45	400	130	10.8
6	51	450	150	16.2



SO



S Eye Hook

- **Material:** high tensile steel
- **Safety factor:** MBL equals 4 x LC
- **Finish:** painted red
- **Certification:** 2.1 2.2
- **Note:** not designed for lifting

lashing capacity	diameter	length	width	width inside	weight each
t	a mm	b mm	c mm	d mm	kg
0.2	10	80	30	16	0.11
0.3	13	100	40	21	0.25
0.5	16	130	50	25	0.48
0.75	18	160	60	34	0.76
1	20	180	65	44	1.07
1.2	22	200	70	40	1.40
1.5	24	220	80	40	1.79
2	32	260	90	50	3.80
3	36	320	100	52	5.35

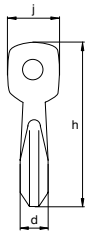
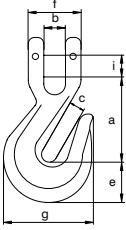
C

Clevis lashing hook



- **Material:** alloy steel, grade 8, quenched and tempered
- **Safety factor:** MBL equals 2 x LC
- **Finish:** painted red
- **Certification:** 2.1 2.2
- **Note:** not designed for lifting

CAC



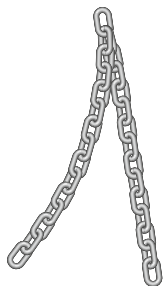
for chain diameter	lashing capacity	length	width	width	thickness	width	width outside	width outside	length outside	diameter pin	width outside	weight each
mm	t	a mm	b mm	c mm	d mm	e mm	f mm	g mm	h mm	i mm	j mm	kg
8	4	65	10	10	16	23	38	56	107	9	19	0.34
10	6.3	82	12	13	25	31	46	75	136	12	27	0.85
13	10	113	16	16	30	43	61	102	185	16	36	1.98
16	16	130	20	19	38	49	69	118	215	20	40	2.95
18/20	25	152	24	24	40	58	88	142	254	22	44	5.12

C

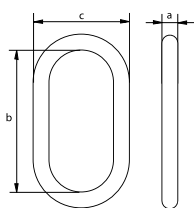
Short link chain

Generally to DIN 766 and DIN 5685-3, commercial quality

- **Material:** mild steel, grade 3
- **Standard:** generally to DIN 766 and DIN 5685-3
- **Finish:** electro-galvanized (E) or hot dipped galvanized (G)
- **Certification:** 2.1
- **Note:** not to be used for lifting applications!



E-7661
G-7662



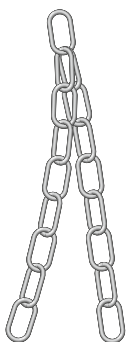
diameter	length inside	width outside	weight per meter
a mm	b mm	c mm	kg
3	16	11	0.17
4	16	14	0.32
5	18.5	17	0.50
6	18.5	20	0.75
7	22	23	1
8	24	26	1.35
9	27	30	1.80
10	28	34	2.25
11	31	36	2.70
13	36	44	3.80
16	45	54	5.80
18	50	60	7.30

C

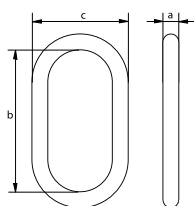
Long link chain

Generally to DIN 763 and DIN 5685-1, commercial quality

- **Material:** mild steel, grade 3
- **Standard:** generally to DIN 763 and DIN 5685-1
- **Finish:** electro-galvanized (E) or hot dipped galvanized (G)
- **Certification:** 2.1
- **Note:** not to be used for lifting applications!



E-7631
G-7632

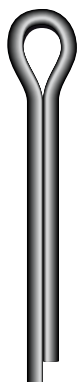


diameter	length inside	width outside	weight per meter
a mm	b mm	c mm	kg
3	26	13	0.14
4	32	16	0.27
5	36	20	0.43
6	42	24	0.63
7	48	28	0.86
8	54	32	1.10
10	66	40	1.75
13	82	50	2.95
16	100	60	4.45



Split pins

- **Material:** mild steel
- **Finish:** electro-galvanized
- **Certification:** 2.1



E-7950



diameter	length	weight per 100 pcs
a mm	b mm	kg
2.5	20	0.08
4	32	0.30
5	36	0.60
6.3	45	1.20
8	63	2.80
8	80	4.40
8	100	4.40
8	125	5.50
8	150	6.60
10	71	5
10	90	6
10	100	6.60
10	120	4.40
12	140	7
12	160	7
13	110	12.1
16	160	16
16	200	20
20	230	30
20	280	17.6

continued on next page >

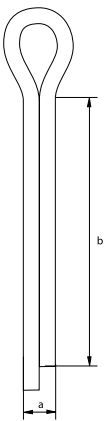
C

Split pins (continued)

- **Material:** mild steel
- **Finish:** electro-galvanized
- **Certification:** 2.1



E-7950

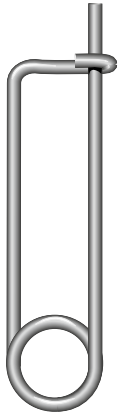


split pins	for shackle									
	G-4163 G-4143	G-4153 G-4133	P-6036 P-6016 ≤150	P-6038 P-6018	P-6033 P-6013 ≤150	G-5263 G-5243	G-5163 G-5143	P-6031 P-6011 ≤150	G-4263 G-4243	G-4553
a x b mm	WLL t	WLL t	WLL t	WLL t	WLL t	WLL t	WLL t	WLL t	WLL t	WLL t
2.5 x 20	0.5									
	0.75									
	1									
	1.5									
4 x 32	2	2				3.3	2			
	3.25	3.25				5	3.25			
5 x 36	4.75	4.75			7	7	4.75		4.75	4.6
	6.5	6.5				9.5	6.5			
6 x 45	8.5	8.5			12.5	12.5	8.5		6.5	8.6
	9.5	9.5			18	15	9.5		8.5	
	12	12				18	12		9.5	
8 x 63	13.5	13.5				21	13.5		12	15.5
	17	17				30	17		16	
8 x 80					30					
					40					
10 x 71	25	25				40	25		25	
	35	35				55	35		30	
10 x 90	42.5	42.5				85	42.5		55	
	55	55					55			
10 x 100	85	85			55	120	85		75	
					75					
10 x 120					125					
12 x 140					150					
					200					
12 x 160					250					
					300					
13 x 110			120	120		150		120		
			150			175		150		
16 x 160			200					200		
			250					250		
			300					300		
16 x 200			400		400			400		
			500		500			500		
20 x 230			600		600			600		
			700					700		
			800					800		
20 x 280			900					900		
			1000					1000		

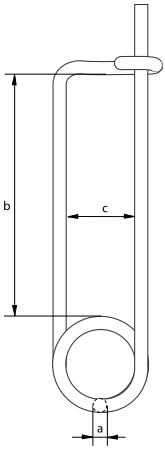
C

Safety Pin

- **Material:** mild steel
- **Finish:** electro-galvanized
- **Certification:** 2.1



E-7945



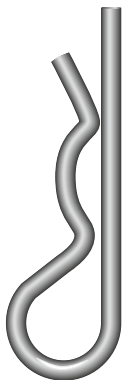
diameter	length inside	width inside	weight per 100 pcs
a mm	b mm	c mm	kg
3	116	24	2.50
3	147	24	2.80

safety pin	for shackle
	P-5367
a x b mm	WLL t
3x116	12 - 55
3x147	85
	120
	150

C

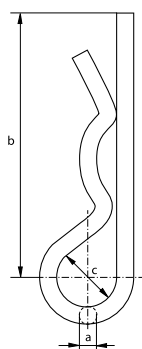
Spring pins, single type

- **Material:** mild steel
- **Finish:** electro-galvanized
- **Certification:** 2.1

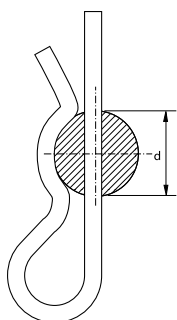


diameter	length	diameter	diameter	weight per 100 pcs
a mm	b mm	c mm	d mm	kg
2	50	10	9 - 14	0.30
3	60	18	10 - 16	0.90
4	60	20	16 - 20	1.60
5	85	24	20 - 28	3.30
6	105	30	28 - 40	6.20
7	105	30	28 - 45	8.30
8	110	28	30 - 45	10.5

E-7930



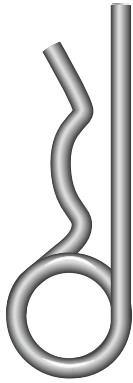
spring pin	for shackle						
	G-4163	G-4153	P-6033	G-5263	G-5163	G-4263	G-4553
a x b mm	WLL t	WLL t	WLL t	WLL t	WLL t	WLL t	WLL t
2 x 50	2	2		3.3	2		
3 x 60	3.25	3.25		5	3.25		
4 x 60	4.75	4.75	7	7	4.75	4.75	4.6
	6.5	6.5		9.5	6.5		
5 x 85	8.5	8.5	12.5	12.5	8.5	6.5	8.6
	9.5	9.5	18	15	9.5	8.5	
	12	12		18	12	9.5	
6 x 105	13.5	13.5		21	13.5	12	15.5
	17	17		30	17	16	
7 x 105	25	25	30	40	25	25	
			40				



C

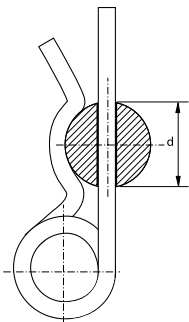
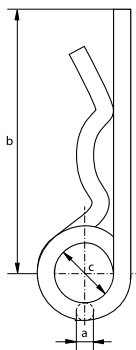
Spring pins, double type

- Material: mild steel
- Finish: electro-galvanized
- Certification: 2.1



E-7931

diameter	length	diameter	diameter	weight per 100 pcs
a mm	b mm	c mm	d mm	kg
2	38	10	08 - 14	0.40
3	62	16	14 - 20	1.40
4	78	23	17 - 24	3
5	92	26	18 - 30	5.30
6	120	30	24 - 36	9.60
7	130	30	24 - 40	13.5
7	150	30	45 - 56	13.5
8	130	30	24 - 45	17.8



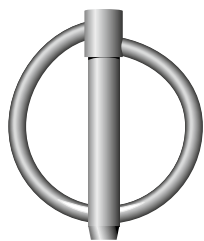
spring pin	for shackle									
	G-4163	G-4153	P-6033	G-5263	G-5163	G-4263	G-4553	P-5361D/F	P-5363	P-5365
a x b mm	WLL t	WLL t	WLL t	WLL t	WLL t	WLL t	WLL t	WLL t	WLL t	WLL t
2 x 38	2	2		3.3	2					
3 x 62	3.25	3.25		5	3.25			6.5		6.5 ~ 12
4 x 78	4.75	4.75	7	7	4.75	4.75	4.6		6.5	17
	6.5	6.5		9.5	6.5					25
	8.5	8.5		12.5	8.5					35
5 x 92	9.5	9.5	12.5	15	9.5	6.5	8.6	9.5	9.5	42.5 ~ 85
	12	12	18	18	12	8.5			12	120 ~ 250
						9.5				
6 x 120	13.5	13.5		21	13.5	12	15.5	12	17	
	17	17		30	17	16		17		
								25		
7 x 150	35	35	55	55	35	30		42.5	35	
	42.5	42.5	75	85	42.5	55		55	42.5	
	55	55			55				55	
8 x 130	25	25	30	40	25	25		35	25	
			40							

C

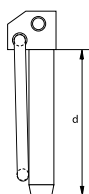
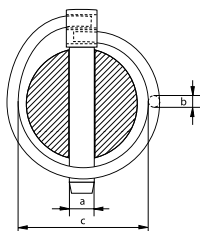
Linch pins

With round spring ring

- **Material:** mild steel
- **Finish:** electro-galvanized
- **Certification:** 2.1



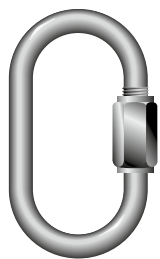
E-7940



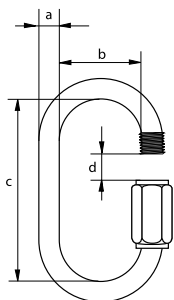
diameter pin	diameter spring ring	width inside spring ring	length pin	weight per 100 pcs
a mm	b mm	c mm	d mm	kg
4.5	2	41	42	2
6	3.4	41	42	2.80
7	3.4	41	42	3
8	3.4	41	42	3.50
9	3.4	41	42	3.80
10	3.4	41	42	4.40
11	3.4	41	42	4.60

linch pin	for shackle						
	G-4163	G-4153	P-6033	G-5263	G-5163	G-4263	G-4553
diameter mm	WLL t	WLL t	WLL t	WLL t	WLL t	WLL t	WLL t
4.5	4.75	4.75	7	7	4.75	4.75	4.6
	6.5	6.5		9.5	6.5	6.5	8.6
	8.5	8.5		12.5	8.5	8.5	
6	9.5	9.5	12.5	15	9.5	9.5	
	12	12	18	18	12		
8	13.5	13.5	30	21	13.5	12	15.5
	17	17		30	17	16	

C



E-7300

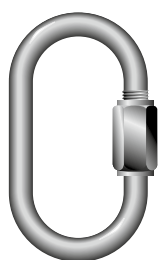


Quick links, standard type

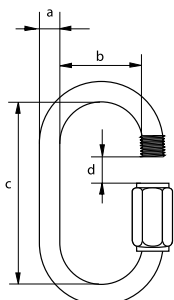
- **Material:** mild steel
- **Finish:** electro-galvanized
- **Certification:** 2.1

diameter	width inside	length inside	opening	minimum breaking load	weight per 100 pcs
a mm	b mm	c mm	d mm	kg	kg
3.5	10	29	5	240	0.90
4	11	32	5	300	1.30
5	13	39	6	540	2
6	14	46	7	750	3.30
7	16	51	8	1125	5.30
8	17	59	10	1500	7.50
9	17	64	11	2000	10.3
10	20	70	12	2400	13
12	23	83	14	3600	25
14	26	97	17	5000	35
16	29	112	20	6000	50

C



E-7310



Quick links, with enlarged opening

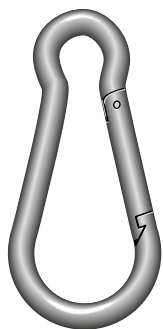
- **Material:** mild steel
- **Finish:** electro-galvanized
- **Certification:** 2.1

diameter	width inside	length inside	opening	minimum breaking load	weight per 100 pcs
a mm	b mm	c mm	d mm	kg	kg
4	12	45	11	800	1.40
5	14	52	13	1250	2.50
6	16	58	14	1750	4.20
7	17	65	16	2500	6.70
8	19	73	17	3250	9.40
9	20	79	19	4000	13.1
10	22	88	20	5000	17.5
12	25	102	23	6250	28.2
14	28	114	26	10000	45.6
16	31	129	29	12500	60.7

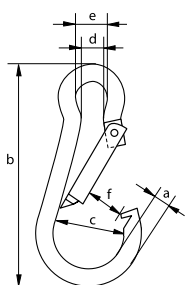
C

Carabine hooks, standard type

- **Material:** mild steel
- **Finish:** electro-galvanized
- **Certification:** 2.1



E-7200

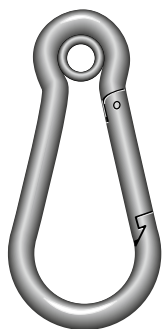


diameter	length	width	width inside	width inside	width opening	minimum breaking load	weight per 100 pcs
a mm	b mm	c mm	d mm	e mm	f mm	kg	kg
4	40	14	5	7	6	-	0.60
5	50	16	7	8	6	100	0.80
6	60	18	7	9	7	120	2.40
7	70	22	9	10	8	180	2.60
8	80	24	11	12	9	300	4.40
9	90	26	11	12	10	330	6.40
10	100	30	12	15	11	460	12.1
11	120	36	14	18	15	600	12.5
12	140	40	16	20	19	680	24.7
13	160	44	20	22	24	800	25
14	180	48	20	22	28	860	35
15	200	60	20	22	35	1370	57.2

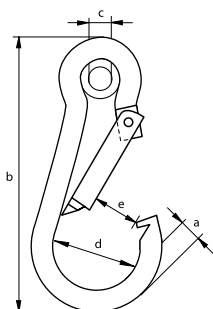
C

Carabine hooks, with pressed thimble

- **Material:** mild steel
- **Finish:** electro-galvanized
- **Certification:** 2.1



E-7210

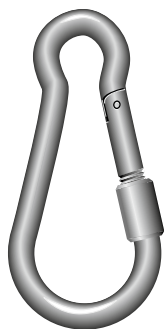


diameter	length	diameter inside thimble	width	width opening	minimum breaking load	weight per 100 pcs
a mm	b mm	c mm	d mm	e mm	kg	kg
4	40	4	14	6	-	0.80
5	50	5	16	6	100	1.60
6	60	6	18	7	120	2.60
7	70	7	22	8	180	4.40
8	80	10	24	9	300	6.40
9	90	12	26	10	330	9.30
10	100	13	30	11	460	12.5
11	120	13	36	15	600	19.5
12	140	15	40	19	680	25
13	160	17	44	24	800	35
14	180	17	48	28	860	50

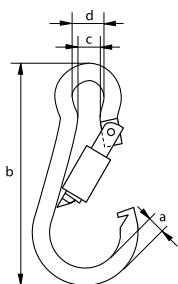
C

Carabine hooks, with screw nut

- **Material:** mild steel
- **Finish:** electro-galvanized
- **Certification:** 2.1



E-7220



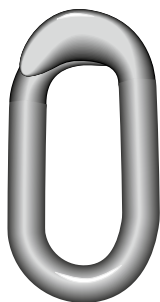
diameter	length	width inside	width inside	minimum breaking load	weight per 100 pcs
a mm	b mm	c mm	d mm	kg	kg
4	40	4	7	-	1.70
5	50	5	7	100	1.90
6	60	6	8	120	2.70
7	70	7	10	180	4.50
8	80	10	12	300	6.50
9	90	12	12	330	10.3
10	100	13	15	460	13.4
11	120	13	16	600	19
12	140	15	19	680	26.5
13	160	17	28	800	37
14	180	17	28	860	52

C

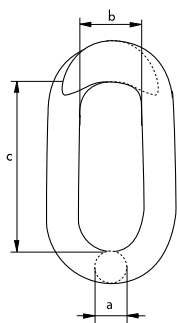
Chain repair links

Commercial quality

- **Material:** mild steel
- **Finish:** electro-galvanized
- **Certification:** 2.1



E-7910



diameter	width inside	length inside	opening	weight per 100 pcs
a mm	b mm	c mm	d mm	kg
3	6.5	16.5	4	0.40
4	8	20	5.5	0.80
4.5	9	22	6	1.10
5	9.5	23	6	1.20
5.5	10.5	26	6	1.80
6	10.5	29	7	2.10
6.5	11.5	30	8	3.20
7	13.5	32	8.5	3.90
8	15	37	9	5.60
9	16.5	37.5	9	7.60
10	17	37.5	9	9.50
12	25	50	12	10

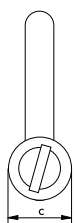
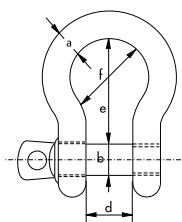
C

Shackles, bow shackles with screw pin

Bow shackles with screw pin



R-7825



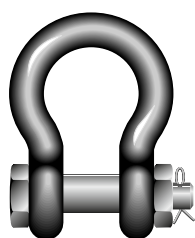
- **Material:** AISI 316
- **Safety factor:** MBL equals 6 x WLL
- **Standard:** generally to DIN 82103
- **Finish:** polished
- **Certification:** 2.1 2.2 3.1 CE IIA
- **Note:** marked with WLL, CE and manufacturer identification symbol (VBS), except for 4 mm as it is too small

working load limit	diameter bow	diameter pin	diameter eye	width inside	length inside	width bow	weight per 100 pcs
t	a mm	b mm	c mm	d mm	e mm	f mm	kg
-	4	4	8	8	16	12	1.20
0.12	5	5	10	10	20	15	1.80
0.15	6	6	12	12	24	18	2.70
0.3	8	8	16	16	32	24	6.30
0.4	10	10	20	20	40	30	12.3
0.6	12	12	24	24	48	36	20.5
1	16	16	32	32	64	48	48
1.5	20	20	40	40	80	60	97
2	22	22	44	44	88	66	146
3	25	25	50	50	100	75	211
3.6	28	28	54	56	116	86	285

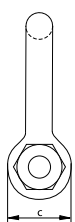
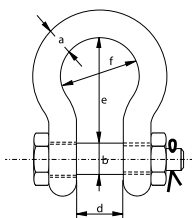
C

Shackles, bow shackles with safety bolt

Bow shackles with safety bolt



R-7827



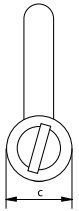
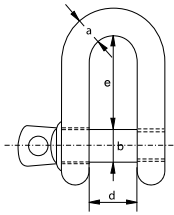
- **Material:** AISI 316
- **Safety factor:** MBL equals 6 x WLL
- **Finish:** polished
- **Certification:** 2.1 2.2 3.1 CE IIA
- **Note:** marked with WLL, CE, traceability code and manufacturer identification symbol (VBS)

working load limit	diameter bow	diameter pin	diameter eye	width inside	length inside	width bow	weight per 100 pcs
t	a mm	b mm	c mm	d mm	e mm	f mm	kg
0.3	8	8	16	16	32	24	7.40
0.4	10	10	19	20	40	30	14.5
0.6	12	12	24	25	49	36	23
1	16	16	31	32	64	48	56.6
1.5	19	19	38	38	80	60	99.5
2	22	22	43	44	85	66	146
3	25	25	49	50	100	75	218

C



R-7821



Shackles, dee shackles with screw pin

Dee shackles with screw pin

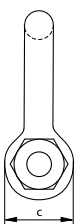
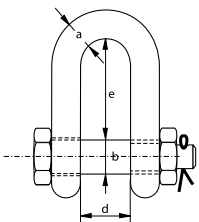
- **Material:** AISI 316
- **Safety factor:** MBL equals 6 x WLL
- **Standard:** generally to DIN 82102
- **Finish:** polished
- **Certification:** 2.1 2.2 3.1 CE IIA
- **Note:** marked with WLL, CE and manufacturer identification symbol (VBS), except for 4 mm as it is too small

working load limit	diameter bow	diameter pin	diameter eye	width inside	length inside	weight per 100 pcs
t	a mm	b mm	c mm	d mm	e mm	kg
-	4	4	8	8	16	0.90
0.12	5	5	10	10	20	1.60
0.15	6	6	12	12	24	2.60
0.3	8	8	16	16	32	5.60
0.4	10	10	20	20	40	13
0.6	12	12	24	24	48	20
1	16	16	32	32	64	48
1.5	20	20	40	40	80	78
2	22	22	44	44	88	127
3	25	25	50	50	100	184
3.6	28	28	54	56	106	250

C



R-7823



Shackles, dee shackles with safety bolt

Dee shackles with safety bolt

- **Material:** AISI 316
- **Safety factor:** MBL equals 6 x WLL
- **Finish:** polished
- **Certification:** 2.1 2.2 3.1 CE IIA
- **Note:** marked with WLL, CE, traceability code and manufacturer identification symbol (VBS)

working load limit	diameter bow	diameter pin	diameter eye	width inside	length inside	weight per 100 pcs
t	a mm	b mm	c mm	d mm	e mm	kg
0.3	8	8	16	16	32	7.10
0.4	10	10	19	20	40	14
0.6	12	12	24	25	48	23.6
1	16	16	31	32	64	54.5
1.5	19	19	38	38	76	96
2	22	22	43	44	85	142
3	25	25	49	50	95	209

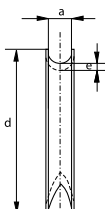
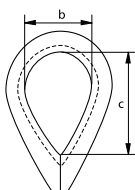
C

Thimbles, heavy type

- Material: AISI 316
- Finish: polished
- Certification: 2.1 CE IIB



R-7860



width groove	width inside	length inside	length	thickness	weight per 100 pcs
a mm	b mm	c mm	d mm	e mm	kg
2	9	15	23	1	0.20
2.5	9.5	15.7	24	1	0.20
3	10	16	25	1	0.30
4	11	17	28	1	0.50
5	13	20	32	1	0.50
6	16	25	39	1.2	0.80
7	18	28	40	1.2	1
8	20	32	49	1.4	1.20
10	26	40	55	1.9	3.40
12	28	45	70	2	4.50
14	34	56	80	2.2	7.30
16	37	62	85	2.5	12.2
18	42	65	95	2.5	15.1
20	45	78	115	3	19
22	50	88	125	3	22.3
24	58	96	135	4	40.5
26	66	105	140	4	49.7

C

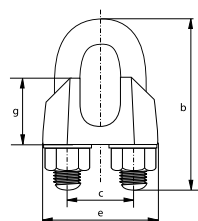
Wire rope clips

Generally to DIN 741

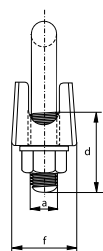
- Material: AISI 316
- Standard: generally to DIN 741
- Finish: polished
- Certification: 2.1 CE IIB



R-7863



diameter wire rope	diameter	length bow	width inside	length thread	length base	thickness base	height base	weight per 100 pcs
mm	a mm	b mm	c mm	d mm	e mm	f mm	g mm	kg
3	4	20	9	12	21	10	10	1.40
4	4	22	9	12	21	10	10	1.40
5	5	24	11	13	23	11	10	1.50
6	5	28	13	15	26	12	11	2.10
8	6	34	16	19	30	14	15	3.50
10	8	42	19	22	34	18	17	6.10
13	10	55	24	30	42	23	21	13
16	12	63	29	33	50	26	26	21
19	12	75	32	38	54	29	30	26
22	14	85	37	44	61	33	34	40
26	14	95	41	45	65	35	37	44





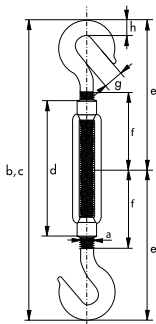
Open body rigging screws Hook-Hook

- Material: AISI 316
- Finish: polished
- Certification: 2.1



R-7837

diameter thread	length closed position	length open position	length body	length	length	length	opening hook	thickness	weight each
a mm	b mm	c mm	d mm	e mm	f mm	g mm	h mm	mm	kg
M5	120	170	70	58	33	8	5	0.04	
M6	150	210	90	73	43	9	6	0.08	
M8	200	290	120	98	56	11	8	0.16	
M10	240	355	150	117	71	12	9	0.27	
M12	310	470	200	157	95	14	11	0.51	
M16	390	590	250	186	116	16	15	1.20	
M20	440	675	300	214	139	18	19	1.90	



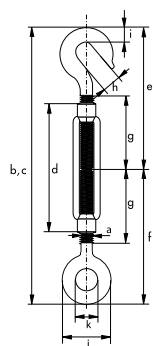
Open body rigging screws Hook-Eye

- Material: AISI 316
- Finish: polished
- Certification: 2.1



R-7838

diameter thread	length closed position	length open position	length body	length	length	length	opening hook	thickness	diameter eye outside	diameter eye inside	weight each
a mm	b mm	c mm	d mm	e mm	f mm	g mm	h mm	i mm	j mm	k mm	kg
M5	120	170	70	58	56	33	8	5	17	8	0.04
M6	150	210	90	73	71	43	9	6	21	10	0.08
M8	200	290	120	98	95	56	11	8	28	14	0.16
M10	240	355	150	117	118	71	12	9	34	16	0.27
M12	310	470	200	157	154	95	14	11	40	18	0.51
M16	390	590	250	186	190	116	16	15	54	26	1.20
M20	440	675	300	214	220	139	18	19	64	30	1.90



C

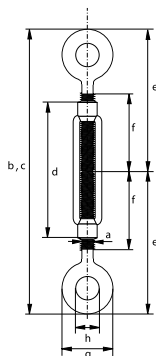
Open body rigging screws Eye-Eye

- Material: AISI 316
- Finish: polished
- Certification: 2.1



R-7839

diameter thread	length closed position	length open position	length body	length	length	diameter eye outside	diameter eye inside	weight each
a mm	b mm	c mm	d mm	e mm	f mm	g mm	h mm	kg
M5	120	170	70	56	33	17	8	0.04
M6	150	210	90	71	43	21	10	0.08
M8	200	290	120	95	56	28	14	0.16
M10	240	355	150	118	71	34	16	0.27
M12	310	470	200	154	95	40	18	0.51
M16	390	590	250	190	116	54	26	1.20
M20	440	675	300	220	139	64	30	1.90



C

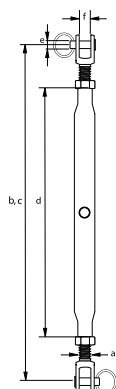
Closed body rigging screws Jaw-Jaw

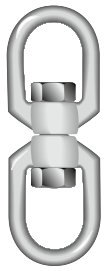
- Material: AISI 316
- Finish: polished
- Certification: 2.1



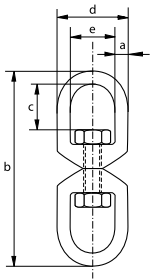
R-7830

diameter thread	length open	length closed	length body	diameter pin	width jaw inside	weight per 100 pcs
a mm	b mm	c mm	d mm	e mm	f mm	kg
M5	190	125	80	5.2	6	6.50
M6	210	155	95	6.2	7.5	8.10
M8	240	180	105	8.7	10	15.9
M10	270	220	125	9.7	12	29.9
M12	360	255	150	12.7	14	53.2
M14	385	270	165	12.7	14	64
M16	450	320	190	16	16	116
M20	450	355	210	19	20	145





R-7877



Swivels

Eye - Eye

- Material: AISI 316
- Finish: polished
- Certification: 2.1

diameter	length	length inside	width outside	width inside	weight per 100 pcs
a mm	b mm	c mm	d mm	e mm	kg
5	60	13	23	13	3.40
6	65	15	26	15	5.10
8	90	22	35	20	13.1
10	115	27	44	24	26
13	154	35	57	32	58
16	188	45	71	39	105
19	229	50	84	41	220

C

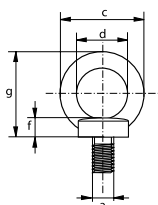
Eye bolts

Generally to DIN 580

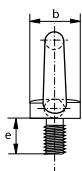


- **Material:** AISI 316
- **Standard:** generally to DIN 580
- **Finish:** polished
- **Certification:** 2.1

R-7840



working load limit	diameter thread	diameter base	diameter eye outside	diameter eye inside	length thread	thickness base	height	weight per 100 pcs
t	a mm	b mm	c mm	d mm	e mm	f mm	g mm	kg
0.07	M6	20	36	20	13	6	36	3
0.14	M8	20	36	20	13	6	36	6
0.23	M10	25	45	25	17	8	45	10.3
0.34	M12	30	54	30	20.5	10	53	17.7
-	M16	35	63	35	27	12	62	28
1.2	M20	40	72	40	30	14	71	45
1.8	M24	45	90	45	36	18	90	74



C

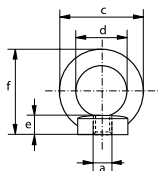
Eye nuts

Generally to DIN 582

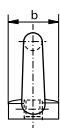


- **Material:** AISI 316
- **Standard:** generally to DIN 582
- **Finish:** polished
- **Certification:** 2.1

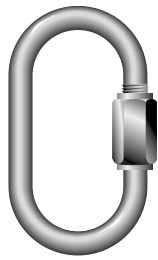
R-7842



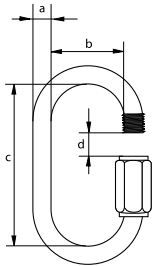
diameter thread	diameter base	diameter eye outside	diameter eye inside	thickness base	height	weight per 100 pcs
a mm	b mm	c mm	d mm	e mm	f mm	kg
M6	20	36	20	8.5	36	4.20
M8	20	36	20	8.5	36	5.20
M10	25	45	25	10	45	9.40
M12	30	54	30	11	53	14.8
M16	35	63	35	13	62	23.7



C



R-7873

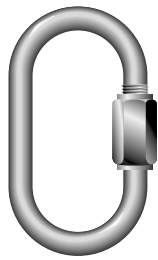


Quick links, standard type

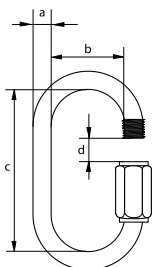
- Material: AISI 316
- Finish: polished
- Certification: 2.1

diameter	width inside	length inside	opening	minimum breaking load	weight per 100 pcs
a mm	b mm	c mm	d mm	kg	kg
3.5	10	29	5	155	0.90
4	12	32	5.5	450	1.20
5	13	39	6.5	585	2
6	14	46	7.5	790	3.30
7	16	51	8.5	1085	5.30
8	17	59	10.5	1380	7.50
9	17	64	11.5	1790	10.3
10	20	70	12.5	2085	13.7
12	23	83	14.5	2265	22.5

C



R-7874



Quick links, with enlarged opening

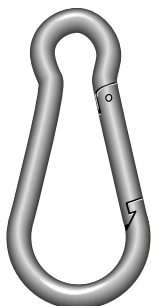
- Material: AISI 316
- Finish: polished
- Certification: 2.1

diameter	width inside	length inside	opening	minimum breaking load	weight per 100 pcs
a mm	b mm	c mm	d mm	kg	kg
3.5	10	40	10	155	1.20
5	14	52	14	585	2.60
6	16	60	16	790	4
8	18	74	18	1380	9.10
10	20	85	20	2085	15.9
12	23	98	23	2265	30.4
14	27	116	26	2540	40.2

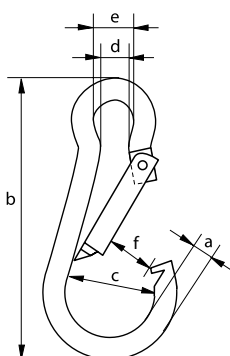
C

Carabine hooks, standard type

- Material: AISI 316
- Finish: polished
- Certification: 2.1



R-7872

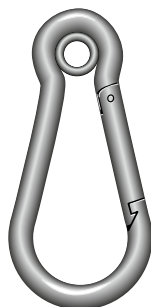


diameter	length	width	width inside	width inside	width opening	minimum breaking load	weight per 100 pcs
a mm	b mm	c mm	d mm	e mm	f mm	kg	kg
4	40	14	5	7	5.5	70	0.80
5	50	16	7	8	7.5	110	1.50
6	60	18	7	9	9	132	2.60
7	70	22	9	10	10.5	198	2.60
8	80	24	11	12	12.5	330	4.40
9	90	26	11	12	10	363	6.40
10	100	30	12	15	15	506	12.2
11	120	36	14	18	17	660	12.5
12	140	40	16	20	22	748	25
13	160	44	20	22	27	880	35
14	180	48	20	22	28	946	35

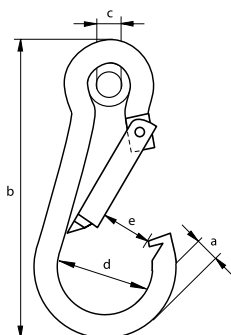
C

Carabine hooks, with pressed thimble

- Material: AISI 316
- Finish: polished
- Certification: 2.1

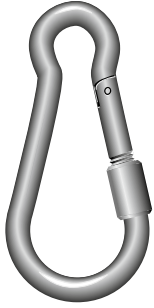


R-7875

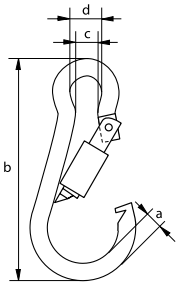


diameter	length	diameter inside thimble	width	width opening	minimum breaking load	weight per 100 pcs
a mm	b mm	c mm	d mm	e mm	kg	kg
4	40	5	14	5.5	70	0.90
5	50	5	16	7.5	110	1.60
6	60	5	18	9	132	2.80
7	70	7	22	10.5	198	4.40
8	80	10	24	12.5	330	6.40
9	90	10	26	10	363	9.30
10	100	13	30	15	506	12.5
11	120	13	36	17	660	18.7
12	140	15	40	22	748	25
13	160	17	44	27	880	35
14	180	17	48	28	946	50

C



R-7876



Carabine hooks, with screw nut

- Material: AISI 316
- Finish: polished
- Certification: 2.1

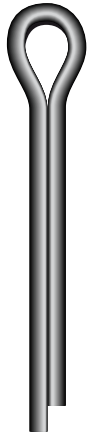
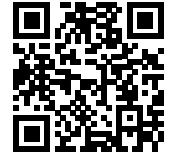
diameter	length	width inside	width inside	minimum breaking load	weight per 100 pcs
a mm	b mm	c mm	d mm	kg	kg
4	40	5	7	70	0.80
5	50	7	8	110	1.70
6	60	7	9	132	2.60
7	70	9	10	198	4.40
8	80	11	12	330	6.40
9	90	11	12	363	9.30
10	100	12	15	506	12.7
11	120	14	18	660	19.5
12	140	16	20	748	25
13	160	20	22	880	35
14	180	20	22	946	50

C

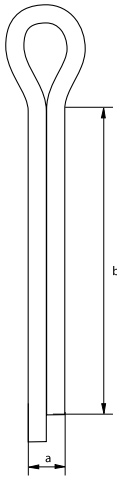
Cotter Pin

Stainless steel cotter pin

- Material: AISI 304
- Finish: polished
- Certification: 2.1

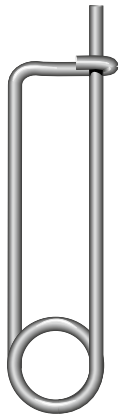


R-7856

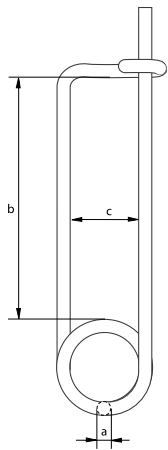


diameter		length	weight per 100 pcs
a	mm	b	kg
	2.5	20	0.08
	4	32	0.30
	5	36	0.60
	6.3	45	1.20
	8	63	2.80
	8	80	4.40
	10	71	5
	10	90	6
	10	100	6.60
	10	120	4.40
	12	140	7
	12	160	7
	12	180	7
	13	110	12.1
	16	160	16

split pin	for shackle										
	G-4163 G-4143	G-4153 G-4133	P-6036 P-6016 ≤150	P-6038 P-6018	P-6033 P-6013 ≤150	G-5263 G-5243	G-5163 G-5143	P-6031 P-6011 ≤150	G-4263 G-4243	G-4553	R-7827 R-7823
a x b mm	WLL t	WLL t	WLL t	WLL t	WLL t	WLL t	WLL t	WLL t	WLL t	WLL t	WLL t
2.5 x 20	0.5										0.4
	0.75										0.6
	1										0.8
	1.5										
4 x 32	2	2				3.3	2				
	3.25	3.25				5	3.25				
5 x 36	4.75	4.75			7	7	4.75		4.75	4.6	1
	6.5	6.5				9.5	6.5				1.5
											2
											3
6 x 45	8.5	8.5			12.5	12.5	8.5		6.5	8.6	3.6
	9.5	9.5			18	15	9.5		8.5		4.5
	12	12				18	12		9.5		
8 x 63	13.5	13.5				21	13.5		12	15.5	
	17	17				30	17		16		
8 x 80					30						
					40						
10 x 71	25	25				40	25		25		
	35	35				55	35		30		
10 x 90	42.5	42.5				85	42.5		55		
	55	55					55				
10 x 100	85	85			55	120	85		75		
					75						
10 x 120					125						
12 x 140					150						
					200						
12 x 160					250						
					300						
13 x 110			120	120		150		120			
			150			175		150			
16 x 160			200					200			
			250					250			
			300					300			



R-7850



Safety Pin

Stainless steel safety pin

- Material: AISI 304
- Finish: polished
- Certification: 2.1



diameter	length inside	width inside	weight per 100 pcs
a mm	b mm	c mm	kg
2	46	18	0.50
3	66	23	1.80
4	74	29	3.90
5	85	38	7.40
6	90	39	12.5

safety pin	for shackle							
	G-4163	G-4153	P-6033	G-5263	G-5163	G-4263	G-4553	P-5367
a x b mm	WLL t	WLL t	WLL t	WLL t	WLL t	WLL t	WLL t	WLL t
2x46	4.75	4.75	7	7	4.75	4.75	4.6	
	6.5	6.5		9.5	6.5	6.5		
3x66	8.5	8.5	12.5	12.5	8.5	8.5	8.6	
	9.5	9.5	18	15	9.5	9.5		
	12	12		18	12	12		
4x74	13.5	13.5	30	21	13.5	16	15.5	
	17	17		30	17	25		
	25	25		40	25			
5x95	35	35	40	55	35	30		
	42.5	42.5	55		42.5			
6x90	55	55	75	85	55	55		
	85	85	125	120	85	75		

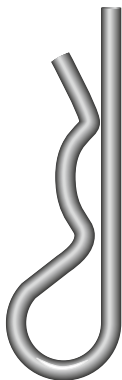
C

Single Spring Pin

Stainless steel single type spring pin

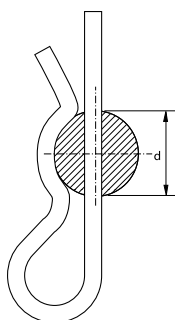
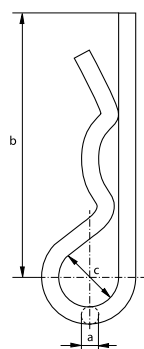
- Material: AISI 304
- Finish: polished
- Certification: 2.1

Scan for additional product details



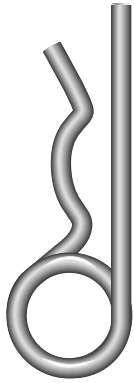
R-7852

diameter	length	diameter	diameter	weight per 100 pcs
a mm	b mm	c mm	d mm	kg
2	50	10	9 - 14	0.30
3	60	18	10 - 16	0.90
4	60	20	16 - 20	1.60
5	85	24	20 - 28	3.30
6	105	30	28 - 40	6.20
7	105	30	28 - 45	8.30
8	110	28	30 - 45	10.5

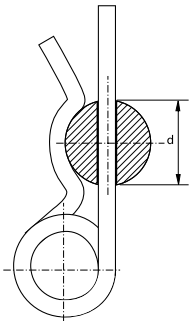
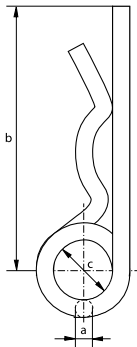


spring pin	for shackle						
	G-4163	G-4153	P-6033	G-5263	G-5163	G-4263	G-4553
diameter mm	WLL t	WLL t	WLL t	WLL t	WLL t	WLL t	WLL t
2	2	2		3.3	2		
3	3.25	3.25		5	3.25		
4	4.75	4.75	7	7	4.75	4.75	4.6
	6.5	6.5		9.5	6.5		
5	8.5	8.5	12.5	12.5	8.5	6.5	8.6
	9.5	9.5	18	15	9.5	8.5	
	12	12		18	12	9.5	
6	13.5	13.5		21	13.5	12	15.5
	17	17		30	17	16	
7	25	25	30	40	25	25	
			40				

C



R-7854



Spring Pins

Stainless steel double type spring pin

- Material: AISI 304 or 316
- Finish: polished
- Certification: 2.1

Scan for additional product details



diameter	length	diameter	diameter	weight per 100 pcs
a mm	b mm	c mm	d mm	kg
2	50	10	8 - 14	0.40
3	62	16	14 - 20	1.40
3	80	15	18 - 30	2.50
4	78	23	17 - 24	3
4	110	21	24 - 45	3
4	120	21	45 - 56	3
4	150	27	45 - 56	3
5	92	26	18 - 30	5.30
6	120	30	24 - 36	9.60
7	130	30	24 - 40	13.5
8	130	30	24 - 45	17.8

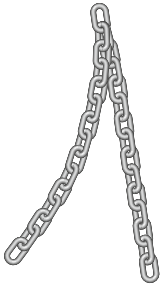
spring pin	for shackle											
	G-4163	G-4153	P-6033	G-5263	G-5163	G-4263	G-4553	P-5363	P-5365	P-5367	P-5361D/F	P-5362D/F
a x b mm	WLL t	WLL t	WLL t	WLL t	WLL t	WLL t	WLL t	WLL t	WLL t	WLL t	WLL t	WLL t
2 x 50	2	2		3.3	2							
3 x 62	3.25	3.25		5	3.25				6.5~12		6.5	
3 x 80										12		
										13.5		
4 x 78	4.75	4.75	7	7	4.75	4.75	4.6	6.5	17			
	6.5	6.5		9.5	6.5		8.6		25			
	8.5	8.5		12.5	8.5				35			
4 x 110										17		
										25		
										35		
4 x 120										42.5		12~55
										55		
4 x 150										85		
										120		
										150		
5 x 92	9.5	9.5	12.5	15	9.5	6.5		9.5	42.5~85		9.5	
	12	12	18	18	12	8.5		12	120~250			
						9.5						
6 x 120	13.5	13.5		21	13.5	12	15.5	17			12	
	17	17		30	17	16					17	
											25	
8 x 130	25	25	30	40	25	25		25			35	
			40									

C

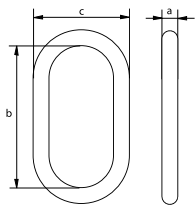
Short link chain

Generally to DIN 766 and DIN 5685-3

- **Material:** AISI 316
- **Standard:** generally to DIN 766 and DIN 5685-3
- **Certification:** 2.1



R-7880



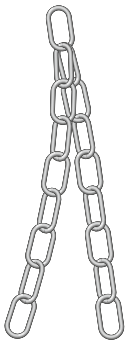
diameter	length inside	width outside	weight per meter
a mm	b mm	c mm	kg
3	16	11	0.17
4	16	14	0.32
5	18.5	17	0.50
6	18.5	20	0.75
8	24	26	1.35
10	28	34	2.25

C

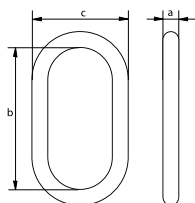
Long link chain

Generally to DIN 763 and DIN 5685-1

- **Material:** AISI 316
- **Standard:** generally to DIN 763 and DIN 5685-1
- **Certification:** 2.1



R-7890



diameter	length inside	width outside	weight per meter
a mm	b mm	c mm	kg
3	26	12	0.14
4	32	16	0.27
5	36	20	0.43
6	42	24	0.63
7	48	28	0.86
8	54	32	1.10
10	66	40	1.75