

C

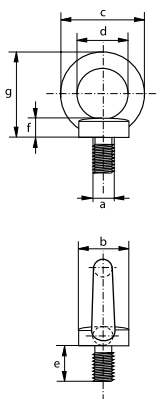
## Eye bolts, generally to DIN 580

### Generally to DIN 580

- **Material:** carbon steel, C15
- **Safety factor:** MBL equals 6 x WLL
- **Standard:** generally to DIN 580
- **Finish:** electro-galvanized
- **Certification:** 2.1 2.2 CE IIA



E-8140



working load limit	diameter thread	diameter base	diameter eye outside	diameter eye inside	length	thickness base	height	weight per 100 pcs
t	a mm	b mm	c mm	d mm	e mm	f mm	g mm	kg
0.07	M6 x 1.00	20	36	20	13	6	36	5.10
0.14	M8 x 1.25	20	36	20	13	6	36	5.50
0.23	M10 x 1.50	25	45	25	17	8	45	10.3
0.34	M12 x 1.75	30	54	30	20.5	10	53	16.9
0.49	M14 x 2.00	35	63	35	27	12	60	29.9
0.7	M16 x 2.00	35	63	35	27	12	62	30.7
0.9	M18 x 2.00	40	72	40	30	14	71	42.8
1.2	M20 x 2.50	40	72	40	30	14	71	42.4
1.5	M22 x 2.50	45	81	45	36	14	80	62.8
1.8	M24 x 3.00	50	90	50	36	18	90	90.8
2.5	M27 x 3.00	50	90	50	39	18	90	88.3
3.2	M30 x 3.50	65	108	60	45	22	109	159
4.3	M33 x 3.50	65	108	60	45	22	110	167
4.6	M36 x 4.00	75	126	70	54	26	128	235
6.1	M39 x 4.00	75	126	70	54	26	130	266
6.3	M42 x 4.50	85	144	80	63	30	147	403
8	M45 x 4.50	85	144	80	63	35	150	521
8.6	M48 x 5.00	100	166	90	68	35	168	632
11.5	M56 x 5.50	110	184	100	78	38	187	879
16	M64 x 6.00	120	206	110	90	42	208	1240
20	M72 x 6.00	150	260	140	100	50	260	2293

CAD

C

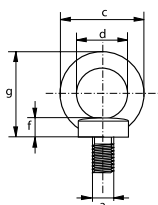
## Eye bolts

Generally to DIN 580

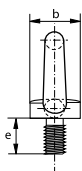


- **Material:** AISI 316
- **Standard:** generally to DIN 580
- **Finish:** polished
- **Certification:** 2.1

R-7840



working load limit	diameter thread	diameter base	diameter eye outside	diameter eye inside	length thread	thickness base	height	weight per 100 pcs
t	a mm	b mm	c mm	d mm	e mm	f mm	g mm	kg
0.07	M6	20	36	20	13	6	36	3
0.14	M8	20	36	20	13	6	36	6
0.23	M10	25	45	25	17	8	45	10.3
0.34	M12	30	54	30	20.5	10	53	17.7
-	M16	35	63	35	27	12	62	28
1.2	M20	40	72	40	30	14	71	45
1.8	M24	45	90	45	36	18	90	74



C

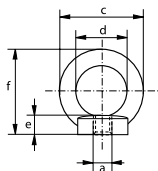
## Eye nuts

Generally to DIN 582



- **Material:** AISI 316
- **Standard:** generally to DIN 582
- **Finish:** polished
- **Certification:** 2.1

R-7842



diameter thread	diameter base	diameter eye outside	diameter eye inside	thickness base	height	weight per 100 pcs
a mm	b mm	c mm	d mm	e mm	f mm	kg
M6	20	36	20	8.5	36	4.20
M8	20	36	20	8.5	36	5.20
M10	25	45	25	10	45	9.40
M12	30	54	30	11	53	14.8
M16	35	63	35	13	62	23.7

