

C

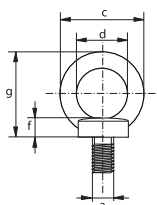
## Eye bolts

Generally to DIN 580

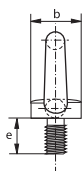
- **Material:** AISI 316
- **Standard:** generally to DIN 580
- **Finish:** polished
- **Certification:** 2.1



R-7840



diameter thread	diameter base	diameter eye outside	diameter eye inside	length thread	thickness base	height	weight per 100 pcs
a mm	b mm	c mm	d mm	e mm	f mm	g mm	kg
M 6	20	36	20	13	6	36	3
M 8	20	36	20	13	6	36	6
M 10	25	45	25	17	8	45	10.3
M 12	30	54	30	20.5	10	53	17.7
M 16	35	63	35	27	12	62	28
M 20	40	72	40	30	14	71	45
M 24	50	90	50	36	18	90	74



C

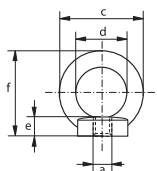
## Eye nuts

Generally to DIN 582

- **Material:** AISI 316
- **Standard:** generally to DIN 582
- **Finish:** polished
- **Certification:** 2.1



R-7842



diameter thread	diameter base	diameter eye outside	diameter eye inside	thickness base	height	weight per 100 pcs
a mm	b mm	c mm	d mm	e mm	f mm	kg
M 6	20	36	20	8.5	36	4.2
M 8	20	36	20	8.5	36	5.2
M 10	25	45	25	10	45	9.4
M 12	30	54	30	11	53	14.8
M 16	35	63	35	13	62	23.7

