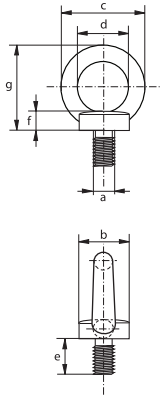


C



E-8140



Eye bolts, generally to DIN 580

Generally to DIN 580

- **Material:** carbon steel, C15
- **Safety factor:** MBL equals 6 x WLL
- **Standard:** generally to DIN 580
- **Finish:** electro-galvanized
- **Certification:** 2.1 2.2 CE

working load limit	diameter thread	diameter base	diameter eye outside	diameter eye inside	length	thickness base	height	weight per 100 pcs
t	a mm	b mm	c mm	d mm	e mm	f mm	g mm	kg
0.07	M 6 x 1.00	20	36	20	13	6	36	5.1
0.14	M 8 x 1.25	20	36	20	13	6	36	5.5
0.23	M 10 x 1.50	25	45	25	17	8	45	10.3
0.34	M 12 x 1.75	30	54	30	20.5	10	53	16.9
0.49	M 14 x 2.00	35	63	35	27	12	60	29.9
0.7	M 16 x 2.00	35	63	35	27	12	62	30.7
0.9	M 18 x 2.50	40	72	40	30	14	71	42.8
1.2	M 20 x 2.50	40	72	40	30	14	71	42.4
1.5	M 22 x 2.50	45	81	45	39	14	80	62.8
1.8	M 24 x 3.00	50	90	50	36	18	90	90.8
2.5	M 27 x 3.00	50	90	50	39	18	90	88.3
3.2	M 30 x 3.50	65	108	60	45	22	109	159
4.3	M 33 x 3.50	65	108	60	45	22	110	167
4.6	M 36 x 4.00	75	126	70	54	26	128	235
6.1	M 39 x 4.00	75	126	70	54	26	130	266
6.3	M 42 x 4.50	85	144	80	63	30	147	403
8	M 45 x 4.50	85	144	80	63	35	150	521
8.6	M 48 x 5.00	100	166	90	68	35	168	632
11.5	M 56 x 5.50	110	184	100	78	38	187	879
16	M 64 x 6.00	120	206	110	90	42	208	1240
20	M 72 x 6.00	150	260	140	100	50	260	2293
28	M 80 x 6.00	170	296	160	112	55	298	3200
40	M 100 x 6.00	190	330	180	130	60	330	4800

C

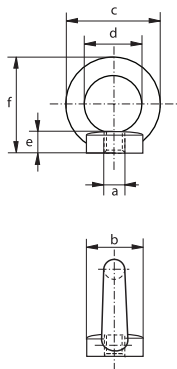
Eye nuts, generally to DIN 582

Generally to DIN 582



- **Material:** carbon steel, C15
- **Safety factor:** MBL equals 6 x WLL
- **Standard:** generally to DIN 582
- **Finish:** electro-galvanized
- **Certification:** 2.1 2.2 CE

E-8142



working load limit	diameter thread	diameter base	diameter eye outside	diameter eye inside	thickness base	height	weight per 100 pcs
t	a mm	b mm	c mm	d mm	e mm	f mm	kg
0.07	M 6 x 1.00	20	36	20	8.5	36	5.1
0.14	M 8 x 1.25	20	36	20	8.5	36	5.2
0.23	M 10 x 1.50	25	45	25	10	45	9.4
0.34	M 12 x 1.75	30	54	30	11	53	16
0.49	M 14 x 2.00	35	63	35	13	60	25.5
0.7	M 16 x 2.00	35	63	35	13	62	24
0.9	M 18 x 2.50	40	72	40	16	71	36
1.2	M 20 x 2.50	40	72	40	16	71	35.2
1.5	M 22 x 2.50	45	81	45	18	80	51.7
1.8	M 24 x 3.00	50	90	50	20	90	75.4
2.5	M 27 x 3.00	50	90	50	20	90	102
3.2	M 30 x 3.50	65	108	60	25	109	125
4.3	M 33 x 3.50	65	108	60	25	110	131
4.6	M 36 x 4.00	75	126	70	30	128	208
6.1	M 39 x 4.00	75	126	70	30	130	210
6.3	M 42 x 4.50	85	144	80	35	147	305
8	M 45 x 4.50	85	144	80	35	150	407
8.6	M 48 x 5.00	100	166	90	40	168	502
8.6	M 52 x 5.00	110	184	100	45	187	830
11.5	M 56 x 5.50	110	184	100	45	187	669
16	M 64 x 6.00	120	206	110	50	208	930
21	M 72 x 6.00	150	260	140	60	260	1500