



## NEW SIZES OF SUPER® BOW SHACKLE AVAILABLE

The Green Pin Super® Bow Shackle SC is a grade 8 bow shackle with screw pin. The screw pin enables quick (dis)assembly which makes the shackle perfect for rigging activities in which assembly and disassembly occur relatively frequently. Handling of the Green Pin Super® Bow Shackle SC is easier due to its smaller size and weight (with an equal working load limit when compared to non-Super products).

Furthermore, the long-term durability of the shackle is assured as a result of its galvanization. Wear and tear of the counter components such as wire rope is also minimized because the chamber in the shackle eye hides the screw thread. The Green Pin Super® Bow Shackle SC is available in a range with a working load limit from 3.3 up to 85t.

For more information, please contact [info@greenpin.com](mailto:info@greenpin.com)

[greenpin.com](http://greenpin.com)

A VAN BEEST BRAND

## Product update

October 2021

### Green Pin Super® Bow Shackle SC

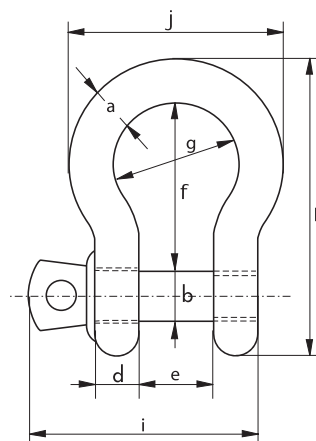
**Product code:** G-5261  
**Material:** alloy steel, Grade 8, quenched and tempered  
**Standard:** ASME B30.26 and meets performance requirements of US Fed. Spec. RR-C-271 Type IVA Class 2, Grade B  
**Safety Factor:** MBL equals 5 x WLL  
**Finish:** hot dipped galvanized  
**Temperature range:** -20°C up to +200°C (-4°F up to +392°F)

**Certification:** 2.1 2.2 3.1 MTC<sup>a</sup> ABS<sup>\*</sup> CE

\* For shackles WLL 3.3t up to 12.5t

working load limit	diameter body	diameter pin	diameter eye	width eye	width inside	length inside	width bow	length	length bolt	width	weight each
t	a mm	b mm	c mm	d mm	e mm	f mm	g mm	h mm	i mm	j mm	kg
3.3	13,5	16	34	13	22	51	32	89	73	58	0.36
5	16	19	40	16	27	64	43	110	89	75	0.63
7	19	22	46	19	31	76	51	129	103	89	1.01
9,5	22	25	52	22	36	83	58	144	119	102	1.5
12,5	25	28	59	25	43	95	68	164	137	118	2.21
15	28	32	66	28	47	108	75	185	153	131	3.16
18	32	35	72	32	51	115	83	201	170	147	4.31
21	35	38	80	35	57	133	92	227	186	162	5.58
30	38	42	88	38	60	146	99	249	203	175	7.43
40	45	50	103	45	74	178	126	300	243	216	12.5
55	57	57	117	57	83	197	138	341	286	252	17.2
85	70	70	143	70	105	260	180	437	354	320	37.6

working load limit	diameter body	diameter pin	diameter eye	width eye	width inside	length inside	width bow	length	length bolt	width	weight each
t	a inch	b inch	c inch	d inch	e inch	f inch	g inch	h inc	i inch	j inch	lbs
3.3	1/2	5/8	1 13/32	1/2	7/8	2	1 1/4	3 1/2	2 7/8	2 3/32	0.79
5	5/8	3/4	1 9/16	5/8	1 1/16	2 17/32	1 11/16	4 11/32	3 1/2	2 15/16	1.38
7	3/4	7/8	1 13/16	3/4	1 7/32	3	2	5 3/32	4 1/16	3 1/2	2.22
9,5	7/8	1	2 1/16	7/8	1 13/32	3 9/32	2 9/32	5 21/32	4 11/16	4 1/32	3.31
12,5	1	1 1/8	2 5/16	33/32	1 11/16	3 3/4	2 11/16	6 15/32	5 13/32	4 21/32	4.86
15	1 1/8	1 1/4	2 19/32	1 3/32	1 27/32	4 1/4	2 15/16	7 9/32	6 1/32	5 5/32	6.97
18	1 1/4	1 3/8	2 27/32	1 1/4	2	4 17/32	3 9/32	7 29/32	6 11/16	5 25/32	9.49
21	1 3/8	1 1/2	3 5/32	1 3/8	2 1/4	5 1/4	3 5/8	8 15/16	7 5/16	6 3/8	12.3
30	1 1/2	1 5/8	3 15/32	1 1/2	2 3/8	5 3/4	3 29/32	9 13/16	8	6 7/8	16.4
40	1 3/4	2	4 1/16	1 25/32	2 29/32	7	4 31/32	11 13/16	9 9/16	8 1/2	27.7
55	2	2 1/4	4 19/32	2 1/4	3 9/32	7 3/4	5 7/16	13 7/16	11 1/4	9 29/32	37.8
85	2 1/2	2 3/4	5 5/8	2 3/4	4 1/8	10 1/4	7 3/32	17 3/16	13 15/16	12 19/32	82.9



## Easy handling due to the Super® Shackle's smaller size and weight

- ✓ Easier handling due to smaller size and weight (with equal WLL)
- ✓ Screw pin for quick (dis)assembly
- ✓ Galvanization assures long-term durability
- ✓ Superior stock availability of 99%
- ✓ Reliable Green Pin® quality and support



[greenpin.com](http://greenpin.com)

### **VAN BEEST B.V.**

Head Office  
Industrieweg 6  
3361 HJ Sliedrecht  
The Netherlands  
Telephone +31 184 41 33 00  
E-mail [sales@vanbeest.eu](mailto:sales@vanbeest.eu)

### **VAN BEEST GmbH**

Märkische Straße 115/117  
44141 Dortmund  
Germany  
Telephone +49 231 58 44 230  
E-mail [sales@vanbeest.eu](mailto:sales@vanbeest.eu)

### **VAN BEEST FRANCE S.A.S.**

Route de Chanier  
63250 Celles sur Durole  
France  
Telephone +33 (0)4 73 51 89 51  
E-mail [sales@vanbeest.eu](mailto:sales@vanbeest.eu)

### **VAN BEEST USA, L.L.C.**

US main office  
5615 W. Fuqua, Building B  
Houston, TX 77085  
United States

Chicago office  
158 South Pinnacle Drive  
Romeoville, IL 60446  
United States

Telephone +1 713 674 57 53  
E-mail [sales.us@vanbeest.com](mailto:sales.us@vanbeest.com)

### **VAN BEEST DO BRASIL**

Rua Alexandre Dumas, 1711, 5<sup>th</sup> Floor  
Chácara Santo Antônio,  
04717-004 Sao Paulo-SP Brazil  
Telephone +55 (11) 2599 8364  
E-mail [vendas@vanbeest.com.br](mailto:vendas@vanbeest.com.br)