

SHORTENING CLUTCHES



Applications

Grade 8 shortening clutches are designed to be used in the manufacturing of grade 8 chain slings. Grade 10 shortening clutches are designed to be used in the manufacturing of grade 10 slings.

Range

Green Pin® offers a range of grade 8 and grade 10 shortening clutches. The range extends from 6 mm to 20 mm ($7/32''$ to $3/4''$).

Design

Green Pin® Grade 8 and Grade 10 shortening clutches are manufactured from drop forged alloy steel.

The shortening components are generally marked with:

- manufacturer's symbol - GP
- chain diameter in mm and/or inch - e.g. 13 and/or $1/2''$
- traceability code - e.g. HA
- steel grade - 8 or 10
- item code - e.g. GVC
- origin - France

Finish

Green Pin® shortening clutches are painted. Grade 8 products were painted yellow or red under the Excel® brand. However, grade 8 products under the Green Pin® brand will be painted white. Grade 10 products are painted blue and will remain so.

Instructions for use

All grade 8 and grade 10 components should be inspected before use to ensure that:

- all markings are legible;
- items with the correct WLL have been selected. For further details, refer to the EN818 standard for chain slings;
- items are not distorted or unduly worn;
- all items are free from nicks, gouges, cracks and corrosion.

Also:

- all components of the sling must be of the same steel grade;
- items should be used for in-line lifting only;
- the bolt, nut or any other locking system must not vibrate out of position;
- items may not be heat treated as this may affect their WLL;
- never modify, repair or reshape an item by machining, welding, heating or bending as this may affect the WLL.



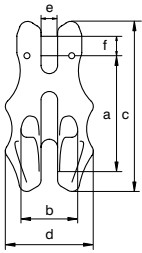
Green Pin® Shortening Clutch EN 1677-1 GR8

Grade 8 shortening clutch EN 1677-1

- **Material:** alloy steel, grade 8, quenched and tempered
- **Safety factor:** MBL equals 4 x WLL
- **Standard :** EN 1677-1 and DIN 5692
- **Finish:** painted yellow (J), red (R) or white
- **Temperature range:** -40°C up to +200°C
- **Certification:** 2.1 2.2 3.1 MPI[®]



GC



for chain diameter		working load limit	length	width inside	length	width outside	width	diameter pin	weight each
mm	inch		a mm	b mm	c mm	d mm	e mm	f mm	
6	7/32	1.12	51	23	75	42	7	8	0.22
7/8	1/4 - 5/16	2	67	30	94	50	9	9	0.41
10	3/8	3.2	79	38	116	63	12	13	0.82
13	1/2	5.4	103	49	149	79	15	16	1.67
16	5/8	8.2	128	60	184	99	19	20	3.1
18/20	3/4	12.8	154	75	215	124	23	24	4.02

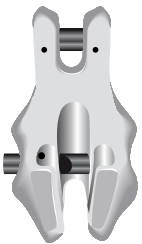
INFO



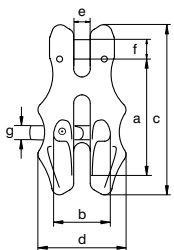
Green Pin® Shortening Clutch with Lock EN 1677-1 GR8

Grade 8 shortening clutch with locking pin EN 1677-1

- **Material:** alloy steel, grade 8, quenched and tempered
- **Safety factor:** MBL equals 4 x WLL
- **Standard :** EN 1677-1 and DIN 5692
- **Finish:** painted yellow (J), red (R) or white
- **Temperature range:** -40°C up to +200°C
- **Certification:** 2.1 2.2 3.1 MPI[®]



GCV



for chain diameter		working load limit	length	width inside	length	width outside	width	diameter pin	diameter pin	weight each
mm	inch		a mm	b mm	c mm	d mm	e mm	f mm	g mm	
6	7/32	1.12	51	23	75	42	7	8	7	0.22
8	1/4 - 5/16	2	67	30	94	50	9	9	8	0.41
10	3/8	3.2	79	38	116	63	12	13	12	0.82
13	1/2	5.4	103	49	149	79	15	16	16	1.67
16	5/8	8.2	128	60	184	99	19	20	20	3.1
20	3/4	12.8	154	75	215	124	23	24	20	4.02

INFO



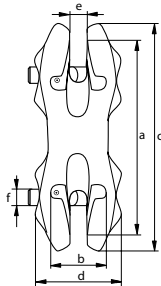
Green Pin® Shortening Clutch with Double Lock EN 1677-1 GR8

Grade 8 shortening clutch with double locking pin EN 1677-1

- **Material:** alloy steel, grade 8, quenched and tempered
- **Safety factor:** MBL equals 4 x WLL
- **Standard :** EN 1677-1 and DIN 5692
- **Finish:** painted yellow (J), red (R) or white
- **Temperature range:** -40°C up to +200°C
- **Certification:** 2.1 2.2 3.1 MPI[®] CE



GDV



for chain diameter		working load limit	length	width inside	length	width outside	width	diameter pin	weight each
mm	inch		a mm	b mm	c mm	d mm	e mm	f mm	
6	7/32	1.12	99	23	120	42	7	7	0.49
8	5/16	2	112	30	140	50	9	8	0.77
13	1/2	5.4	178	49	208	79	15	16	2.85

INFO



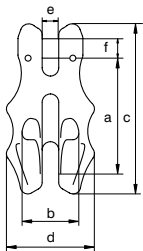
Green Pin® Shortening Clutch GR10

Grade 10 shorting clutch with locking pin

- **Material:** alloy steel, grade 10, quenched and tempered
- **Safety factor:** MBL equals 4 x WLL
- **Finish:** painted blue
- **Temperature range:** -40°C up to +200°C
- **Certification:** 2.1 2.2 3.1 MPI[®]



UGC



for chain diameter		working load limit	length	width inside	length	width outside	width	diameter pin	weight each
mm	inch		a mm	b mm	c mm	d mm	e mm	f mm	
6	7/32	1.4	51	23	75	42	7	8	0.23
8	5/16	2.6	67	30	94	50	9	10	0.45
10	3/8	4	79	38	116	63	12	13	0.9
13	1/2	6.8	103	49	149	79	15	16	1.8
16	5/8	10.3	128	60	184	99	19	20	3.1
20	3/4	16	154	75	215	124	23	24	4



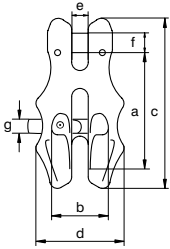
Green Pin® Shortening Clutch with Lock GR10

Grade 10 shortening clutch with locking pin

- **Material:** alloy steel, grade 10, quenched and tempered
- **Safety factor:** MBL equals 4 x WLL
- **Finish:** painted blue
- **Temperature range:** -40°C up to +200°C
- **Certification:** 2.1 2.2 3.1 MPI[®]



UGCV



for chain diameter		working load limit t	length	width inside	length	width outside	width	diameter pin	diameter pin	weight each kg
mm	inch		a mm	b mm	c mm	d mm	e mm	f mm	g mm	
6	7/32	1.4	51	23	75	42	7	8	7	0.23
8	5/16	2.6	67	30	94	50	9	10	8	0.44
10	3/8	4	79	38	116	63	12	13	12	0.76
13	1/2	6.8	103	49	149	79	15	16	16	1.67
16	5/8	10.3	128	60	184	99	19	20	20	3.1
20	3/4	16	154	75	215	124	23	24	20	4



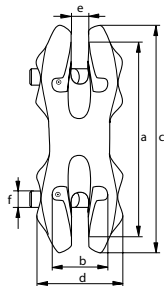
Green Pin® Shortening Clutch with Double Lock GR10

Grade 10 shortening clutch with double locking pin

- **Material:** alloy steel, grade 10, quenched and tempered
- **Safety factor:** MBL equals 4 x WLL
- **Finish:** painted blue
- **Temperature range:** -40°C up to +200°C
- **Certification:** 2.1 2.2 3.1 MPI[®]



UGDC



for chain diameter		working load limit t	length	width inside	length	width outside	width	diameter pin	weight each kg
mm	inch		a mm	b mm	c mm	d mm	e mm	f mm	
6	7/32	1.4	99	23	120	42	7	7	0.49
8	5/16	2.6	112	30	140	50	9	8	0.77
13	1/2	6.7	178	49	208	79	15	16	2.85