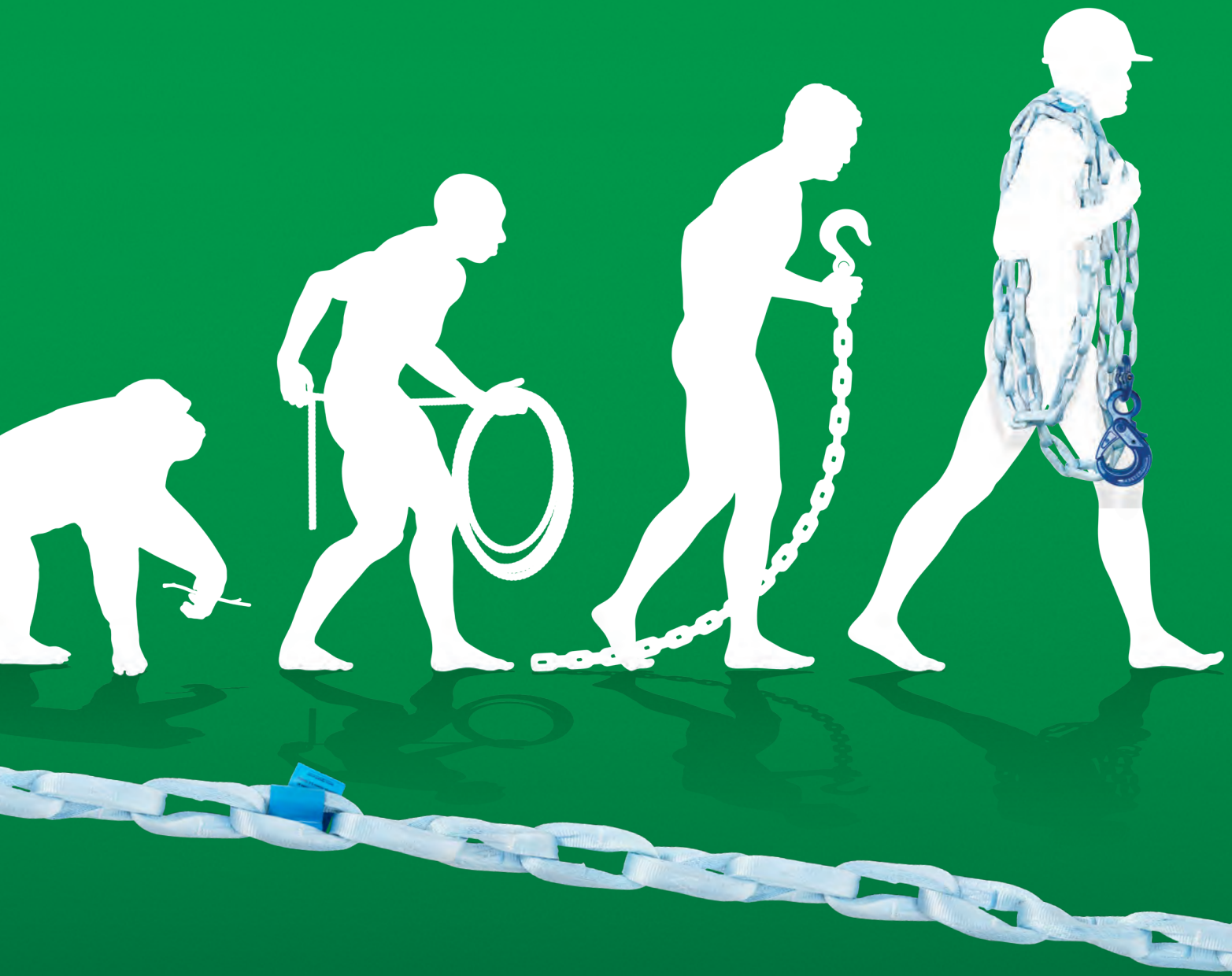


# Chain of evolution











# Evolve your lashing and lifting

## Welcome to the fibre age

---

Step into a new era of safer and more efficient lashing and lifting. An era that is powered by Green Pin Tycan<sup>®</sup> Chains, made from Dyneema<sup>®</sup> fibre. Green Pin Tycan<sup>®</sup> is up to eight times lighter than steel – yet just as strong. Evolve your lashing and lifting capabilities and enter a new reality in which safety and efficiency go hand in hand. Join leading heavy-lifting companies such as Mammoet in experiencing the superiority of our award-winning Green Pin Tycan<sup>®</sup> Chain.



# Combine safety and efficiency

---

Green Pin Tycan® combines the almost paradoxical characteristics of being feather light and soft to the touch, while providing the strength of steel. This makes Green Pin Tycan® the first chain that offers both safety and efficiency.

## **Secure your crew and your cargo**

Green Pin Tycan® allows companies to achieve a safer working environment for their crew. The soft touch and light weight reduce the risk of bad backs, cuts, bruises or hearing damage. Furthermore, the risk of damage to vulnerable and valuable cargo is reduced significantly, as is the threat of claims from customers.

## **Increase Operational Efficiencies**

Green Pin Tycan® Chain is very easy to use and up to eight times lighter than a steel chain of comparable strength. This makes even long lengths of Green Pin Tycan® light enough for one person to work with all day long. Your operations will benefit from reduced sick leave, fewer delays and lower transport costs.

# Chain of evolution

Green Pin Tycan® has the features to help you get the job done, while providing a much safer working environment and increased efficiency for you and your customers.

**Light**  
Up to eight times lighter than steel chains



**Green**  
Environmentally friendlier production process than that of a steel chain



**Rugged**  
Very resistant to chemicals, grease, dirt, salt and low temperatures



**Soft**  
Lower risk of damaging cargo and injuring crew



**Strong**  
Made from Dyneema®, the world's strongest man-made fibre



**Waterproof**  
No absorption, it floats on water



**Quiet**  
Reduced risk of hearing damage and noise pollution







**GP**  
GreenPini  
**tycan**  
WLL 5T  
TC: AQAC  
Article code: FCHAIN1525  
**CE**  
CERTIFIED FOR LIFTING

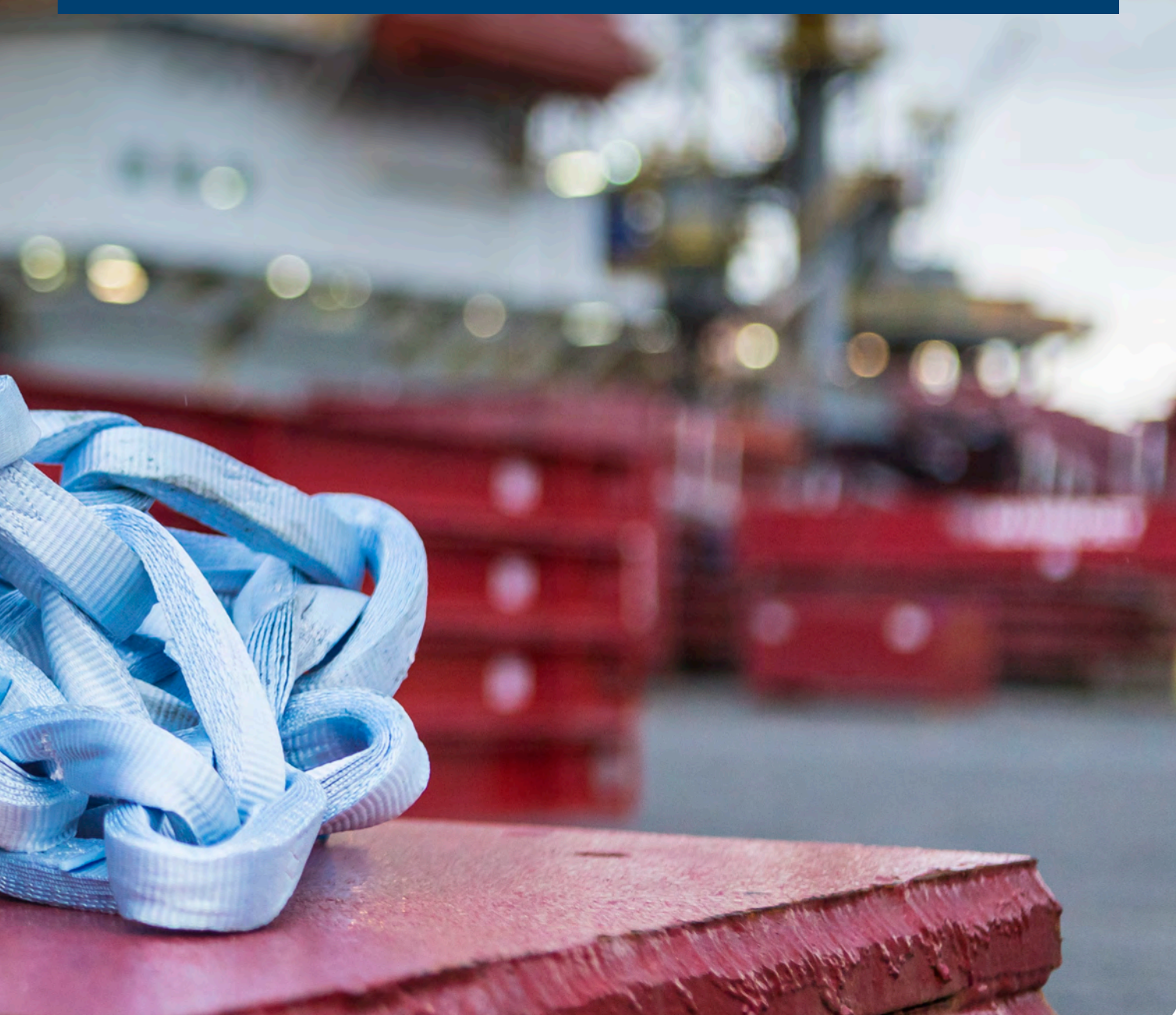


# Performance and quality guaranteed

---

Dyneema<sup>®</sup>, the world's strongest man-made fibre, is manufactured by multinational DSM, headquartered in The Netherlands and respected as the premium brand for Ultra-High Molecular Weight Polyethylene (UHMwPE). The fibre is applied in products ranging from body armour to sports equipment.

The Dyneema<sup>®</sup> trademark provides end users with a guarantee that they are investing in performance and quality.







# Light weight for heavy duties

For lashing, the light weight means even long lengths of Green Pin Tycan® can easily be handled by just one person. The example below shows the difference in weight of a rigger that carries and transports Green Pin Tycan® versus steel chain of 20 ton MBL.

The weight of lashing steel chain vs. Green Pin Tycan® Chain.

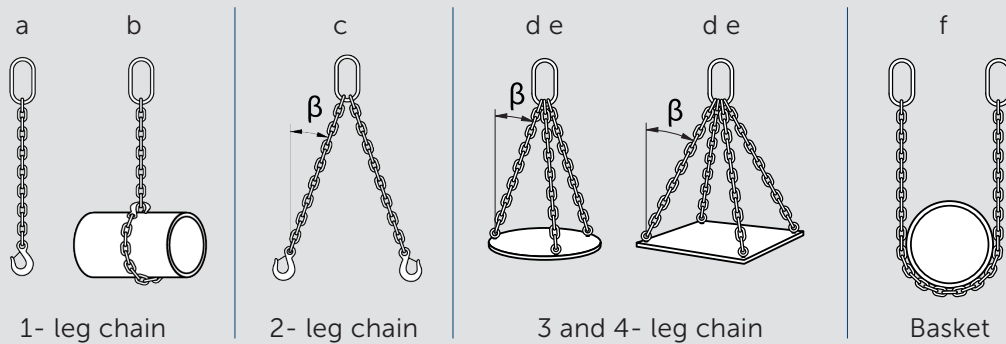
	Steel Chain G80 13mm	Green Pin Tycan®
One flatbed truck carries 6 x 6 meters of chain	162 kg. (357 lb.)	20 kg. (44 lb.)
Weight loaded and unloaded once per day	324 kg. (714 lb.)	40 kg. (88 lb.)
245 working days / year	79,380 kg. (175,003 lb.)	9,878 kg. (21,777 lb.)

Source: Mammoet.



# Lifting Configurations

Green Pin Tycan® can be used in multiple lifting configurations. Safety Factor: 4:1

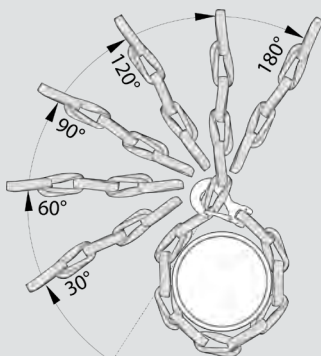


Working Load Limit table for Green Pin Tycan® Chain Slings generally to EN818-4

Type of hitch		a	b	c	c	d e	d e	f
Angle of inclination ( $\beta$ )		-	-*	0°-45°	45°-60°	0°-45°	45°-60°	-**
Load factor		1	0.8	1.4	1	2.1	1.5	1.5
Working Load Limit (t)	11x15	2.6	2.1	3.6	2.6	5.5	3.9	3.9
	11x20	4.0	3.2	5.6	4.0	8.4	6.0	6.0
	15x25	5.0	4.0	7.0	5.0	10.5	7.5	7.5
	13x30	6.8	5.4	9.5	6.8	14.3	10.2	10.2
	15x40	10.3	8.2	14.4	10.3	21.6	15.5	15.5

Working Load Limit table for Green Pin Tycan® Chain Slings (US)

Type of hitch		a	b	c	c	c	d e	d e	d e	f
Angle of inclination ( $\beta$ )		-	-*	0°-30°	30°-45°	45°-60°	0°-30°	30°-45°	45°-60°	-**
Load factor		1	0.8	1.7	1.4	1.0	2.6	2.1	1.5	1.5
Working Load Limit (t)	11x15	2.6	2.1	4.5	3.6	2.6	6.8	5.5	3.9	3.9
	11x20	4.0	3.2	6.9	5.6	4.0	10.4	8.4	6.0	6.0
	15x25	5.0	4.0	8.7	7.0	5.0	13.0	10.5	7.5	7.5
	13x30	6.8	5.4	11.8	9.5	6.8	17.7	14.3	10.2	10.2
	15x40	10.3	8.2	17.8	14.4	10.3	26.8	21.6	15.5	15.5



Angle of Choke	Rated load % of single leg chain sling	Rated load (t) of single leg chain sling
120°-180°	80%	4.00t
90°-119°	65%	3.25t
60°-89°	55%	2.75t
30°-59°	40%	2.00t

\* See below capacity reduction table of angles of choke less than 120°.  
 \*\* See below capacity reduction table for non-vertical chain sling legs.

# Don't just take our word for it

Green Pin Tycan® has been thoroughly tested in our testing facilities and in real-life circumstances. Not only that, the quality and performance of Green Pin Tycan® is also recognized by respected industry players.

## Trusted users

Green Pin Tycan® is already being used by some of the world's largest project logistics companies, including Mammoet who use Green Pin Tycan® in multiple locations worldwide.

## Trusted safety

The specially developed chain fittings are designed to perfectly fit Green Pin Tycan® Chains. For increased safety, the use of these tested and qualified fittings is needed.

## Trusted recognition

Green Pin Tycan® was recently awarded the LEEA Innovation of the Year at its annual UK exhibition and conference.

Each year the Offshore Technology Conference (OTC) recognizes innovative technologies with the Spotlight on New Technology® Award. Green Pin Tycan® won this award in 2019.

## Trusted qualification

Green Pin® worked in close collaboration with DNV, the global quality assurance- and risk management company, to create a new standard for high performance Fibre Chain. Green Pin Tycan® is type approved by DNV.







## Evolve your safety and efficiency with Green Pin Tycan® Chains

- Up to eight times lighter than steel and soft to the touch
- Made from Dyneema® fibre: as strong as steel and very rugged
- Increased safety for crew and cargo
- Improved operational efficiency
- Used by leading companies
- DNV type approved

[tycan.com](https://tycan.com)



### **VAN BEEST B.V.**

Head Office  
Industrieweg 6  
3361 HJ Sliedrecht  
The Netherlands  
Telephone +31 184 41 33 00  
E-mail [sales@vanbeest.eu](mailto:sales@vanbeest.eu)

### **VAN BEEST GmbH**

Märkische Straße 115/117  
44141 Dortmund  
Germany  
Telephone +49 231 58 44 230  
E-mail [sales@vanbeest.eu](mailto:sales@vanbeest.eu)

### **VAN BEEST FRANCE S.A.S.**

1 impasse du Patureau de Jalonne  
63250 Celles sur Durolle  
France  
Telephone +33 (0)4 73 51 89 51  
E-mail [sales@vanbeest.eu](mailto:sales@vanbeest.eu)

### **VAN BEEST USA, L.L.C.**

US main office  
5615 W. Fuqua, Building B  
Houston, TX 77085  
United States

Chicago office  
158 South Pinnacle Drive  
Romeoville, IL 60446  
United States

Telephone +1 713 674 57 53  
E-mail [sales.us@vanbeest.com](mailto:sales.us@vanbeest.com)

### **VAN BEEST DO BRASIL**

Rua Alexandre Dumas, 1711, 5<sup>th</sup> Floor  
Chácara Santo Antônio,  
04717-004 Sao Paulo-SP Brazil  
Telephone +55 (11) 2599 8364  
E-mail [vendas@vanbeest.com.br](mailto:vendas@vanbeest.com.br)



**GREEN TO GO**

**tycan**