



# POWER TO THE WIRE

Green Pin Power Sling® Shackle





# Green Pin Power Sling® Shackle

Lift the same load  
with a lighter wire.

---

Working on heavy lift projects in challenging times requires revolutionary power. The new Green Pin Power Sling® Shackle gives you this power. It has a unique design that enables you to lift the same load with a lighter wire. Lighter wire means lower costs, giving you more competitive power. That's our kind of power.

**Power to the wire.**



# Lower your costs

The Green Pin Power Sling® Shackle lets you save up to 20% on synthetic- and wire rope costs thanks to its revolutionary design. It has an optimal D/d ratio and the widest crown (+10%) in the industry.

The Green Pin Power Sling® shackle distributes stress better than any other shackle in its class; the result of reinforcement of the areas that endure the highest stress. Together with the improved D/d ratio this boosts the bending efficiency of the wire to 85%. This way, the Green Pin Power Sling® allows you to use a lighter wire to lift the same load, lowering cost significantly.



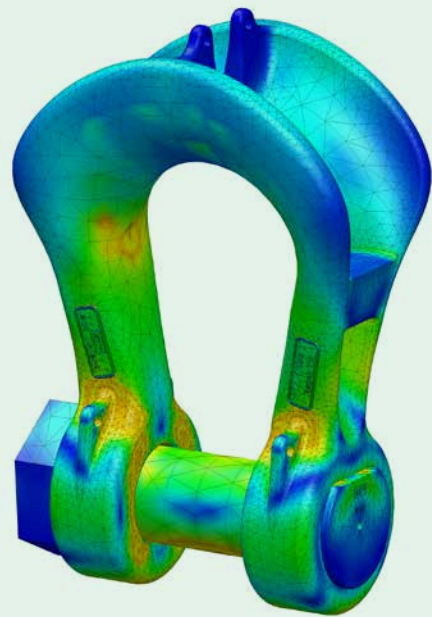
10% wider shackle crown



save 20% on wire rope

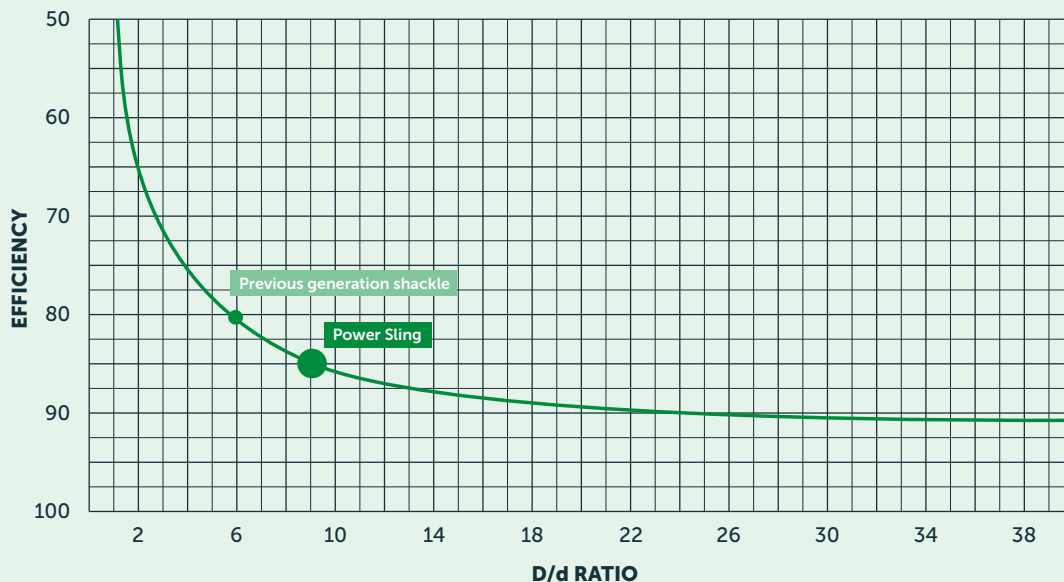


range from 125t - 1250t



## Bending efficiency steel wire/synthetic sling

Reduction in strength of wire/synthetic rope when bent over sheaves or pins of various sizes.





# A surge in safety

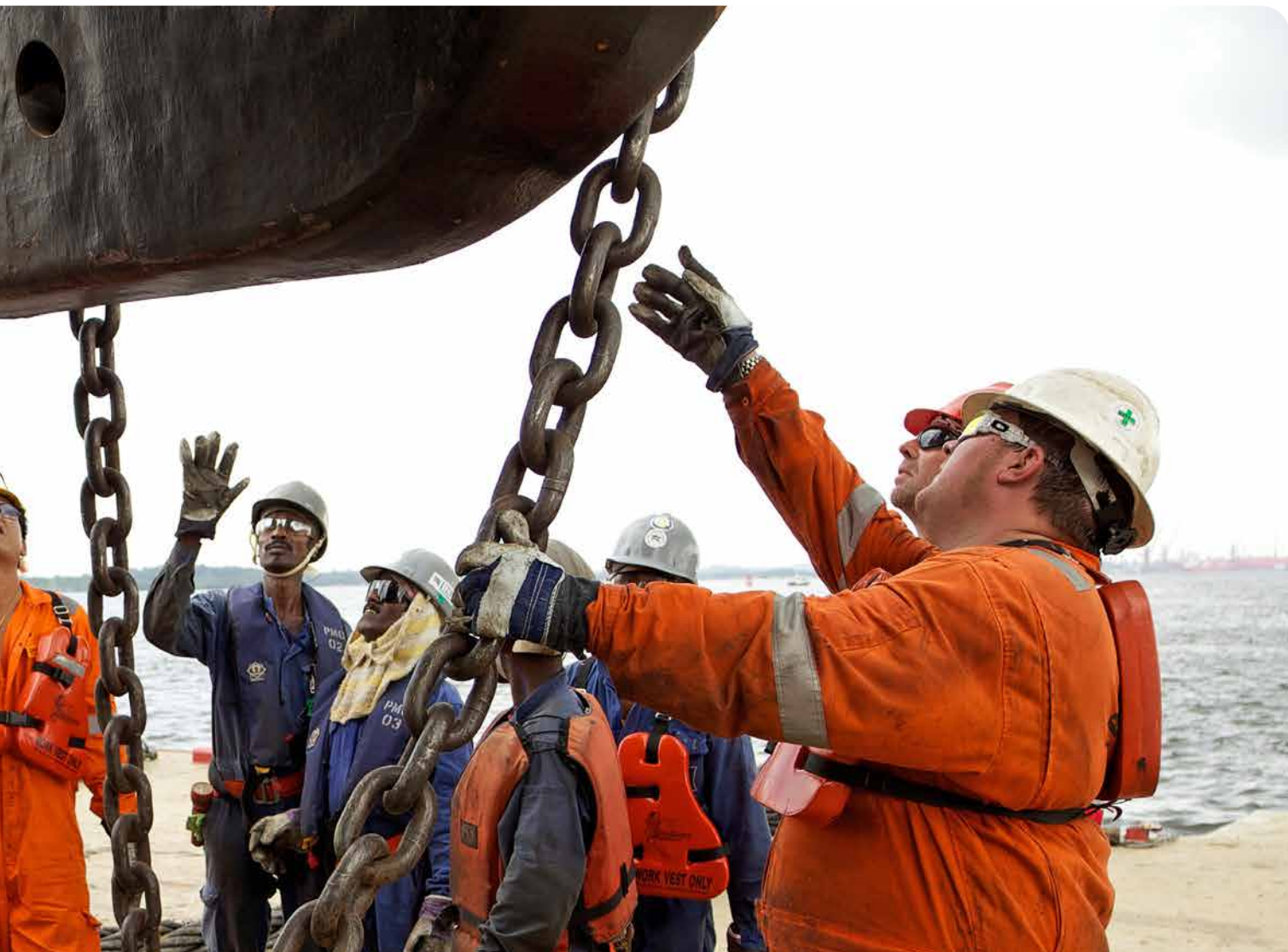
The Green Pin Power Sling® Shackle offers a surge in safety thanks to increased safety margins. Each shackle has been individually proofload tested to twice the Working Load Limit; more than any other competing product. Material characteristics have been thoroughly examined, both internally and in the shackle's surface, by MPI-tests, ultrasonic inspection and X-ray tests.

The Power Sling®'s long-term performance has been scrutinized with tensile- and fatigue testing, subjecting it to more than 40.000 cycles. There are virtually no limits to the testing regime the Power Sling® has been put through. Even

the ductility of the steel has been checked at temperatures as low as minus 40 °Celsius degree (-40 °F). The Power Sling® is compliant with major certifications. Of course, it is reliably made in Europe and accompanied by a EUR1-certificate.







# Easy does it

With the Green Pin Power Sling® Shackle, heavy lifting has never been easier. It offers riggers great handling thanks to the lower body weight and multiple handling points.

Handling points attached to body and pin let you assemble sling and load with much less effort. The consistent mouthwidth between batches of Power Sling® shackles guarantees that dimensions in the technical documentation are truly accurate. Tracking and identification of the shackle are easy

thanks to markings on both sides of the shackle body (not on the bearing surface) and an RFID-chip in the pin and shackle. To top it all off; the optional bayonet nut (pictured) further improves the ease of assembly and prevents objects from getting caught in the nut.



## Experience the potency of the Green Pin Power Sling® Shackle

---

- Save up to 20% on wire & synthetic rope costs
- Lift the same load with lighter wire
- A truly unique design (patent pending)
- Range of WLL 125t - 1250t
- Increased safety: tried and tested to the limit
- Lift heavy loads with less effort and more efficiency



[greenpin.com/power](https://greenpin.com/power)

### **VAN BEEST B.V.**

Head Office  
P.O. Box 57  
3360 AB Sliedrecht  
The Netherlands  
Telephone +31 184 41 33 00  
E-mail [sales@vanbeest.nl](mailto:sales@vanbeest.nl)

### **VAN BEEST GmbH & Co. KG**

Industriestraße 9  
D-59457 Werl  
Germany  
Telephone +49 2922 97 430  
E-mail [sales@vanbeest.de](mailto:sales@vanbeest.de)

### **VAN BEEST FRANCE S.A.S.**

Route de Chanier  
63250 Celles sur Durolle  
France  
Telephone +33 (0)4 73 51 89 51  
E-mail [sales@vanbeest.fr](mailto:sales@vanbeest.fr)

### **VAN BEEST USA, L.L.C.**

US main office  
1357 Sheffield Blvd.  
Houston, Texas 77015  
USA

Chicago office  
158 South Pinnacle Drive,  
Romeoville, IL 60446  
USA

Telephone +1 713 674 57 53  
E-mail [sales.us@vanbeest.com](mailto:sales.us@vanbeest.com)

**GREEN TO GO**

